



LED Tunable, Back-Lit Thin Panel Luminaire

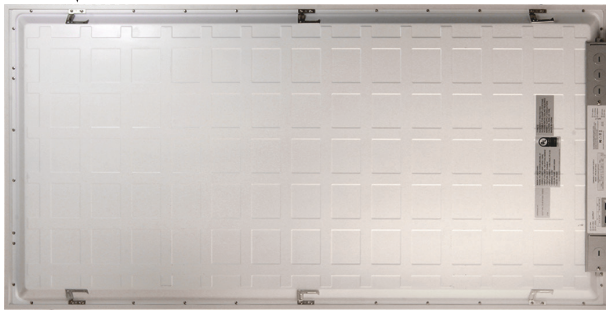
2x4 ft, with Programmable Wattage & CCT – Dimmable

30, 40 & 50 Watts – 3500K, 4000K & 5000K – 120 to 277VAC – 120° Wide Beam – UL



Bend-Up Hanger
(4 plcs.)

REAR
VIEW



LED Driver

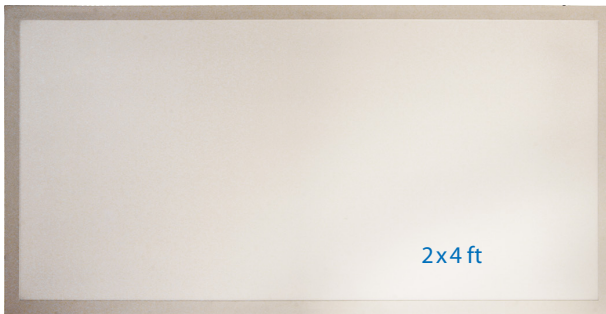
CCT Tunable Switch

Power
Tunable
Switch



Dimmable 0-10 with
External Dimmer /
Non-Flicker

TOP
VIEW



2x4 ft

CLL2X4CT-3050W-3550-101DBL

Nominal Power	30 Watts	40 Watts	50 Watts
COLOR TEMP. (CCT)	Warm White / 3500K		
Input Power	29.5 Watts	41.3 Watts	48.8 Watts
Input Current	0.246A	0.343A	0.403A
Total Lumens	4332 lm	5747 lm	6556 lm
Efficacy	147 lm/W	139 lm/W	134 lm/W
Max. Candela	1432 cd	1886 cd	2149 cd
Power Factor	0.99	1.0	1.0
COLOR TEMP. (CCT)	Natural White / 4000K		
Input Power	28.4 Watts	39.5 Watts	46.5 Watts
Input Current	0.237A	0.328A	0.385A
Total Lumens	4410 lm	5967 lm	6857 lm
Efficacy	155 lm/W	151 lm/W	148 lm/W
Max. Candela	1456 cd	1956 cd	2252 cd
Power Factor	0.99	1.0	1.0
COLOR TEMP. (CCT)	Pure White / 5000K		
Input Power	29.3 Watts	41.3 Watts	49 Watts
Input Current	0.247A	0.343A	0.407A
Total Lumens	4205 lm	5591 lm	6422 lm
Efficacy	144 lm/W	135 lm/W	131 lm/W
Max. Candela	1385 cd	1840 cd	2115 cd
Power Factor	0.99	1.0	1.0
Input Voltage	120~277VAC (Tested @ 120VAC)		
Illumination Angle	115° x 120°		
CRI	>80		
Dimmability	When Wired to External 0-10V Dimmer / Non-Flicker		
Frame	Plastic / White Color		
Diffuser Plate	Polystyrene / Frosted White		
Protection Rating	IP40 (Dry or Damp Location Use Only)		
Oper. Temperature	-13°F ~+122°F / -25°C ~+50°C		
Dimensions	47.81 x 23.75 x 0.37 inch / 1214 x 603 x 9.40 mm		
Weight	9.11 lbs / 4.14 kg		
UL/cUL Listing	E476593 (PLB-XX24-YYDDL-BBL)		

FEATURES

- 5 Year LEDtronics Warranty
- **Long Lifespan:** Lumen Maintenance over 70% @ 50,000+ Hours
- **Energy Savings** up to 75% over Fluorescents
- **Variable Wattage:** 30W, 40W & 50W
- **Programmable White CCT:** 3500K, 4000K or 5000K
- Continuous Dimmability with External 0-10V Dimmers – No Flicker – Title 24 Compliant
- **Solid State** – High Shock-Proof & High Vibration-Proof
- **SMD2835 Chips:** High Lumen, High CRI, No Heat
- White Trim Plastic Frame, High Quality Light Guide Plate
- Frosted White PS Diffuser Offers High Light Uniformity & Transmission
- **UL/cUL Listed** (E476593)
- No UV or IR, No Glass, No Lead or Mercury

APPLICATIONS

- Recessed Panel Luminaires for Ambient Lighting of Interior Commercial Spaces
- Ultraslim Profile Fits Seamlessly into Standard Dropped Ceiling Troffer & Parabolic Fixtures
- Industrial Area Lighting
- Hospital & Hospitality Lighting
- Office & Conference Rooms
- Retail & Convenience Stores
- Commercial Area Lighting
- Schools/Colleges/Universities

AVAILABLE OPTIONS

- 90-Minute /10W Emergency Power Pack
- 1x4 & 2x2 Panel Sizes

WWW.LEDTRONICS.COM

106 890 / Rev 09-2023

LEDTRONICS®

America's Premium Brand LED Company™



23105 Kashiwa Court, Torrance, CA 90505
 Phone: (800) 579.4875 / (310) 534.1505
 Fax: (310) 534.1424
 E-mail: info@ledtronics.com
 Website: ledtronics.com

© 2023 LEDtronics, Inc.

40 Years of
LEDtronics Design,
Engineering &
Manufacturing
Experience

To order LEDtronics products,
contact the Distributor or Sales Representative in your area.

Visit our website to find your local Distributor or Representative
from our worldwide network:

LEDtronics.com

Check LEDTRONICS.COM for latest data.
Printed material may be outdated.

LED Tunable & Dimmable Back-lit Thin Panel Luminaire: 2x4 ft

OPTIONAL ACCESSORIES *(Sold Separately)*

Surface Mounting Aluminum Frames for Ceilings or Walls



2x2', 1x4', 2x4' Frames:
 23.4 x 23.4 x 2.4 inch [608 x 608 x 62 mm]
 12.0 x 47.9 x 2.4 inch [305 x 1218 x 62 mm]
 23.4 x 47.9 x 2.4 inch [608 x 1218 x 62 mm]

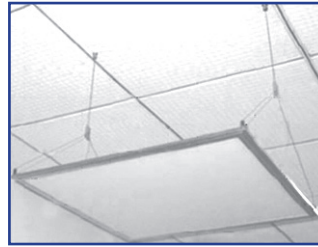
Silver or White Frame:

CLL2X2BL-SMF-001SIL, CLL2X2BL-SMF-001WHT
 CLL1X4BL-SMF-001SIL, CLL1X4BL-SMF-001WHT
 CLL2X4BL-SMF-001SIL, CLL2X4BL-SMF-001WHT

Steel Wire Cables for Ceiling Suspension

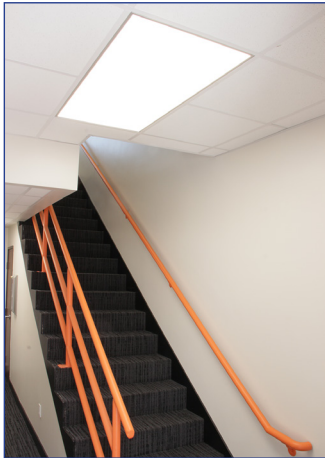
1x4', 2x4' Panels CLL-MTG-CABLE-002DB
 2x2' Panels CLL-MTG-CABLE-001DB

Vertical Wire: 46.12 in [1.2 m]
 Lateral Wire: 21.75 in [0.6 m]
 Wire Thickness: 0.04 in [1mm]
 Number of Wire Stations: 3 (-002DB), 2 (-001DB)

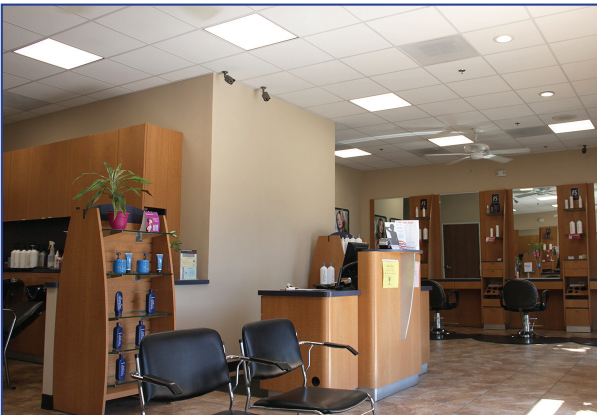


2x2' Panel Suspension Cable shown with two stations

APPLICATIONS



LEDtronics Thin Panel Dimmable Lights illuminate Medical Offices, Salons, Reception Areas, Hallways and Stairwells



LEDTRONICS[®]
 America's Premium Brand LED Company™

© 2023 LEDtronics, Inc.

scmbdc[®]
 Southern California
 Minority Business Development Council



23105 Kashiwa Court, Torrance, CA 90505

Phone: (800) 579.4875 / (310) 534.1505

Fax: (310) 534.1424

E-mail: info@ledtronics.com

Website: ledtronics.com