



LED Tunable, Back-Lit Thin Panel Luminaire

2x2 ft, with Programmable Wattage & CCT – Dimmable

20, 25, 30 & 35 Watts – 3000K, 3500K, 4000K & 5000K – 120 to 277VAC – 115° Wide Beam – UL



WWW.LEDTRONICS.COM

106 889 / Rev 09-2023

Check LEDTRONICS.COM for latest data. Printed material may be outdated.



Dimmable 0-10 / Non-Flicker

2x2 ft



CCT & Power Tunable Switches

Bend-Up Hanger (4 plcs.)

LED Driver

FEATURES

- 5 Year LEDtronics Warranty
- **Long Lifespan:** Lumen Maintenance over 70% @ 50,000+ Hours
- **Energy Savings** up to 75% over Fluorescents
- **Variable Wattage** in 5W Increments, from 20W to 35W
- **Programmable White CCT:** 3000K, 3500K, 4000K or 5000K
- Continuous Dimmability with External 0-10V Dimmers – No Flicker – Title 24 Compliant
- **Solid State** – High Shock-Proof & High Vibration-Proof
- **SMD2835 Chips:** High Lumen, High CRI, No Heat
- White Trim Plastic Frame, High Quality Light Guide Plate
- Frosted PS Diffuser Offers High Light Uniformity & Transmission
- **UL/cUL Listed** (E476593)
- No UV or IR, No Glass, No Lead or Mercury

APPLICATIONS

- Recessed Panel Luminaires for Ambient Lighting of Interior Commercial Spaces
- Ultraslim Profile Fits Seamlessly into Standard Dropped Ceiling Troffer & Parabolic Fixtures
- Industrial Area Lighting
- Hospital & Hospitality Lighting
- Office & Conference Rooms
- Retail & Convenience Stores
- Commercial Area Lighting
- Schools/Colleges/Universities

AVAILABLE OPTIONS

- 90-Minute /10W Emergency Power Pack
- 1x4 & 2x4 Panel Sizes

At 30 Watts

Equivalent to 2-Tube Fluorescent Fixtures up to 98W

At 35 Watts

Equivalent to 2-Tube Fluorescent Fixtures up to 130W

CLL2X2CT-2035W-3050-101DBL

Nominal Power	20 Watts	25 Watts	30 Watts	35 Watts
COLOR TEMP. (CCT)	Warm White / 3000K			
Input Power	19 Watts	24.1 Watts	29.4 Watts	35.1 Watts
Input Current	0.159A	0.202A	0.245A	0.295A
Total Lumens	2603 lm	3221 lm	3913 lm	4539 lm
Efficacy	137 lm/W	134 lm/W	133 lm/W	129 lm/W
Max. Candela	879 cd	1085 cd	1312 cd	1529 cd
Power Factor	0.99	1.0	1.0	0.99
COLOR TEMP. (CCT)	Medium White / 3500K			
Input Power	20.1 Watts	25 Watts	30 Watts	35.2 Watts
Input Current	0.167A	0.208A	0.247A	0.293A
Total Lumens	2944 lm	3607 lm	4293 lm	4982 lm
Efficacy	147 lm/W	144 lm/W	143 lm/W	142 lm/W
Max. Candela	991 cd	1217 cd	1440 cd	1665 cd
Power Factor	1.0	1.0	0.99	1.0
COLOR TEMP. (CCT)	Natural White / 4000K			
Input Power	20.1 Watts	25.1 Watts	30.1 Watts	34.7 Watts
Input Current	0.169A	0.208A	0.252A	0.288A
Total Lumens	3017 lm	3717 lm	4396 lm	5042 lm
Efficacy	150 lm/W	148 lm/W	146 lm/W	145 lm/W
Max. Candela	1013 cd	1247 cd	1468 cd	1684 cd
Power Factor	1.0	1.0	0.99	0.99
COLOR TEMP. (CCT)	Pure White / 5000K			
Input Power	20.6 Watts	26.2 Watts	30.6 Watts	35.9 Watts
Input Current	0.172A	0.219A	0.255A	0.299A
Total Lumens	3062 lm	3756 lm	4423 lm	5059 lm
Efficacy	149 lm/W	143 lm/W	145 lm/W	141 lm/W
Max. Candela	1028 cd	1260 cd	1471 cd	1685 cd
Power Factor	1.0	1.0	1.0	0.99
Input Voltage	120~277VAC (Tested @ 120VAC)			
Illumination Angle	115° x 115°			
CRI	>80			
Dimmability	When Wired to External 0-10V Dimmer / Non-Flicker			
Frame	Plastic / White Color			
Diffuser Plate	Frosted White / Polystyrene			
Protection Rating	IP40 (Dry or Damp Location Use Only)			
Oper. Temperature	-4°F ~+122°F / -20°C ~+50°C			
Dimensions	23.75 x 23.75 x 1.38 inch / 603.2 x 603.2 x 35 mm			
Weight	4.58 lbs / 2.08 kg (w/Power Supply)			
UL/cUL Listing	E476593 (PLB-XXW22-28CDML-01)			

LEDTRONICS®

America's Premium Brand LED Company™



23105 Kashiwa Court, Torrance, CA 90505
 Phone: (800) 579.4875 / (310) 534.1505
 Fax: (310) 534.1424
 E-mail: info@ledtronics.com
 Website: ledtronics.com

40 Years of
**LEDtronics Design,
 Engineering &
 Manufacturing
 Experience**

To order LEDtronics products,
 contact the Distributor or Sales Representative in your area.

Visit our website to find your local Distributor or Representative
 from our worldwide network:

LEDtronics.com

© 2023 LEDtronics, Inc.

LED Tunable & Dimmable Back-lit Thin Panel Luminaire: 2x2 ft

OPTIONAL ACCESSORIES *(Sold Separately)*

Surface Mounting Aluminum Frames for Ceilings or Walls



2x2', 1x4', 2x4' Frames:
 23.4 x 23.4 x 2.4 inch [608 x 608 x 62 mm]
 12.0 x 47.9 x 2.4 inch [305 x 1218 x 62 mm]
 23.4 x 47.9 x 2.4 inch [608 x 1218 x 62 mm]

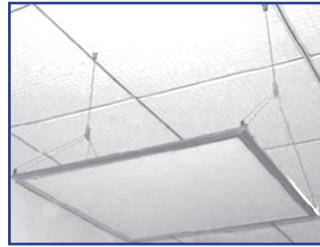
Silver or White Frame:

CLL2X2BL-SMF-001SIL, CLL2X2BL-SMF-001WHT
 CLL1X4BL-SMF-001SIL, CLL1X4BL-SMF-001WHT
 CLL2X4BL-SMF-001SIL, CLL2X4BL-SMF-001WHT

Steel Wire Cables for Ceiling Suspension

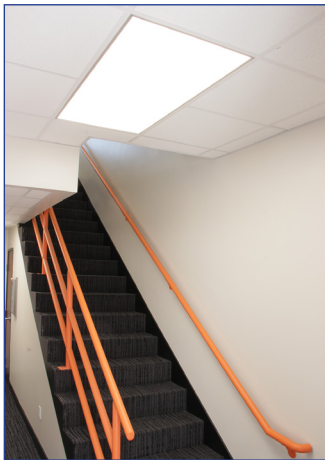
1x4', 2x4' Panels CLL-MTG-CABLE-002DB
 2x2' Panels CLL-MTG-CABLE-001DB

Vertical Wire: 46.12 in [1.2 m]
 Lateral Wire: 21.75 in [0.6 m]
 Wire Thickness: 0.04 in [1mm]
 Number of Wire Stations: 3 (-002DB), 2 (-001DB)

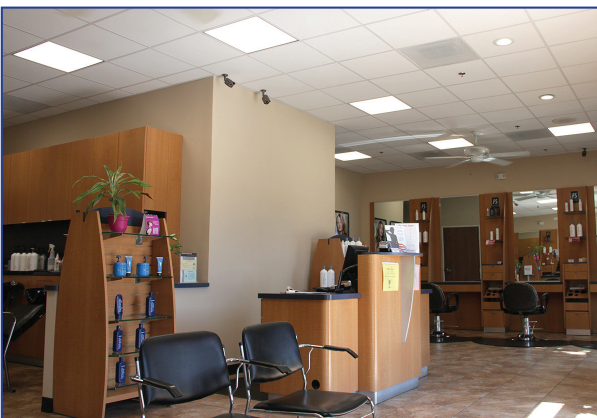


2x2' Panel Suspension Cable shown with two stations

APPLICATIONS



LEDtronics Thin Panel Dimmable Lights illuminate Medical Offices, Salons, Reception Areas, Hallways and Stairwells



LEDTRONICS[®]
 America's Premium Brand LED Company™

© 2023 LEDtronics, Inc.

scmbdc[®]
 Southern California
 Minority Business Development Council



23105 Kashiwa Court, Torrance, CA 90505

Phone: (800) 579.4875 / (310) 534.1505

Fax: (310) 534.1424

E-mail: info@ledtronics.com

Website: ledtronics.com