



LED Miniature Wedge Base Indicator Lights

0.6~1.8 Watt – 12, 14, 24 or 28 VAC/VDC – 1800K to 5000K – Omnidirectional White Light



FEATURES

- 3 Year LEDtronic Warranty
- Up to 70% Energy Reduction over Incandescents
- White LED Lumen Maintenance >70% at 15,000 Hours
- Solid State – High Shock & Vibration Resistant
- Compact Bulb Fits in Enclosed Fixtures & Tight Spaces
- High Lumen, High Efficacy, Instant-on, No Flickering
- W2.1x9.5d Wedge, White Polycarbonate Sleeve
- Bipolar Terminals for Ease of Installation
- Minimal Heat Generation, No UV, No RF Interference
- Wide Operating Temp. Range: ~-40°F to ~+212°F

APPLICATIONS

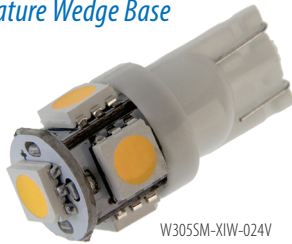
- Marker Lamps
- Indicator Lamps
- Replaces 14, 24 or 28 VAC/VDC Glass Miniature Wedge Bulbs & Color Incandescent Bulbs when Used under a Color-Tinted Lens
- Gaming & Industrial High-Use Bulb Reliability

AVAILABLE OPTIONS (for large orders)

- Other Voltages
- Other White Color Temperatures
- Other Beam Angles

Over 35 Years of LEDtronic Design, Engineering & Manufacturing Experience

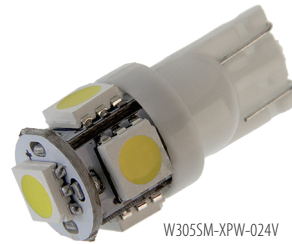
T3¼ [T10 Metric] Miniature Wedge Base



W305SM-XIW-024V



W305SM-XNW-024V



W305SM-XPW-024V



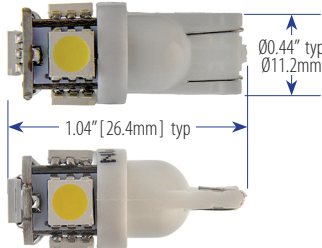
W305SM-XSW-024V

W305SM-XIW-024V (Warm White)
W305SM-XNW-024V (Natural White)
W305SM-XPW-024V (Pure White)
W305SM-XSW-024V (Soft White)

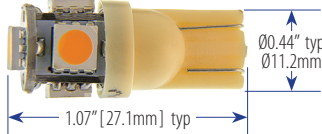
24VAC/VDC

SIDE VIEWS

W305SM-XIW-024V
W305SM-XNW-024V
W305SM-XPW-024V



W305SM-XSW-024V



Color Temperature

Input Voltage

Input Power

Input Current

Lumens

Efficacy (lm/W)

Luminous Intensity

SCP

Illumination Angle

Dimmability

Operating Temp.

Sleeve Material/Color

Weight

Dimensions

	XIW		XNW		XPW		XSW	
	3000K	4000K	4000K	5000K	5000K	1800K	1800K	1800K
Color Temperature	3000K	4000K	4000K	5000K	5000K	1800K	1800K	1800K
Input Voltage	24VAC	24VDC	24VAC	24VDC	24VAC	24VDC	24VAC	24VDC
Input Power	0.6 Watts	1.3 Watts	0.7 Watts	1.3 Watts	0.7 Watts	1.3 Watts	0.7 Watts	1.3 Watts
Input Current	0.030A	0.052A	0.032A	0.055A	0.032A	0.054A	0.031A	0.053A
Lumens	28.0 lm	63.59 lm	30.53 lm	69.18 lm	30.92 lm	70.00 lm	25.30 lm	58.59 lm
Efficacy (lm/W)	46.70	48.92	43.60	53.22	44.20	53.85	36.14	45.07
Luminous Intensity	2399 mcd	3705 mcd	2918 mcd	5267 mcd	2660 mcd	4705 mcd	2455 mcd	3778 mcd
SCP	2.22	5.06	2.43	5.50	2.46	5.57	2.01	4.66
Illumination Angle	320°							
Dimmability	Not Dimmable							
Operating Temp.	-40°F ~+212°F / -40°C ~+100°C							
Sleeve Material/Color	Polycarbonate / White							
Weight	0.072 oz / 2.04 g							
Dimensions	1.04 x 0.44 in / 26.4 x 0.112 mm						1.07 in / 27.1 mm	

LEDTRONICS®

America's Premium Brand LED Company™



© 2022 LEDtronic, Inc.



23105 Kashiwa Court, Torrance, CA 90505
 Phone: (800) 579.4875 / (310) 534.1505
 Fax: (310) 534.1424
 E-mail: info@ledtronic.com
 Website: ledtronic.com

To order LEDtronic products, contact the Distributor or Sales Representative in your area.

Visit our website to find your local Distributor or Representative from our worldwide network:

LEDtronic.com

WWW.LEDTRONICS.COM

LOG 833 / Rev 05-2022

Check LEDTRONICS.COM for latest data. Printed material may be outdated.

12/14VDC

28VAC/VDC



*T3¼ [T10 Metric]
Miniature Wedge Base*

W305SM-XNW-014V

Emitted Color	Natural White	
Color Temperature	4000K	
Input Voltage	12/14VDC	
Tested Voltage	12VDC	14VDC
Input Power	0.8 Watts	1.512 Watts
Input Current	0.064A	0.108A
Lumens	88.96 lm	133.43 lm
Efficacy (lm/W)	111	88
Luminous Intensity	11220 mcd	14007 mcd
SCP	7.08	10.62
Illumination Angle	162°	145°
Dimmability	Not Dimmable	
Operating Temp.	-40°F ~+212°F / -40°C ~+100°C	
Sleeve Material/Color	Polycarbonate / White	
Weight	0.072 oz / 2.04 g	
Dimensions	1.03 x Ø0.44 in / 26.2 x Ø11.1 mm	

W305SM-XNW-028V

Emitted Color	Natural White	
Color Temperature	4000K	
Input Voltage	28VAC	28VDC
Input Power	0.9 Watts	1.8 Watts
Input Current	0.035A	0.064A
Lumens	35.39 lm	84.61 lm
Efficacy (lm/W)	39.3	47.0
Luminous Intensity	5595 mcd	8661 mcd
SCP	2.81	6.73
Illumination Angle	320°	
Dimmability	Not Dimmable	
Operating Temp.	-40°F ~+212°F / -40°C ~+100°C	
Sleeve Material/Color	Polycarbonate / White	
Weight	0.072 oz / 2.04 g	
Dimensions	1.03 x Ø0.44 in / 26.2 x Ø11.1 mm	

