



LED Machine Status Indicator & Utility Bulb

1~1.5W – 120VAC or 12V AC/DC – 3000K White – Omnidirectional Beam – Ba15s or Ba15d Base



FEATURES

- 2 Year LEDtronics U.S. Warranty
- Up to 90% Energy Reduction over Halogens, Incandescents
- Long Lifespan: White LED Lumen Maintenance >70% at 25,000 Hours – Reduces Re-lamp Frequency
- Solid State – High Shock & Vibration Resistant
- Compact Bulb Fits in Enclosed Fixtures & Tight Spaces
- High Lumen, High Efficacy, Instant-on, No Flickering
- Omnidirectional: No-Shadow Beam, Even Light
- Clear, Polycarbonate Lexan 101 Lens (UL94V-2)
- Wide Operating Temperature Range: -30°C to +50°C
- Minimal Heat Generation, No UV or IR, No RF Interference
- Eco-Friendly: No Toxic Metals – RoHS Compliant
- Made in USA from Imported Parts

APPLICATIONS

- For Indoor, Water-Protected Use
- Use as Machine Status Indicators On:
 - ▶ Siemens
 - ▶ Square D Company/Telemecanique Inc. (XVAL series)
 - ▶ PATLITE/Sasaki Electric (LH & WM series)
 - ▶ Joslyn Clark (SL System)
 - ▶ Torq
 - ▶ Klockner Moeller
 - ▶ Werma
- Accent Lighting Applications
- Task Lighting

AVAILABLE OPTIONS (for large orders)

- Other Colors & White Color Temperatures
- Other Voltages
- Other Miniature & Subminiature Bases: E12, E14, E17, etc.

40 Years of LEDtronics Design, Engineering & Manufacturing Experience

STL609SM-XIW-120A

Input Voltage	120VAC
Input Power	1.0 Watt
Input Current	0.019A
Lumens	105 lm
SCP (Spherical Candela)	8.32 mscp
Efficacy	105 lm/W
Max. Candela	1.2 cd
Power Factor	0.476
Illumination Angle	360° Omnidirectional
Emitted Color	Warm White
Color Temperature	3000K
Dimmability	Not Dimmable
Base	Ba15s, Nickel-Plated Brass
Lens	Polycarbonate Lexan 101 (UL94V-2), Clear
LEDs	7 pcs
Oper. Temperature	-22°F ~+122°F / -30°C ~+50°C
Dimensions	1.85 x Ø0.869 inch / 47 x Ø22.07 mm
Net Weight	0.4 oz / 11.34g

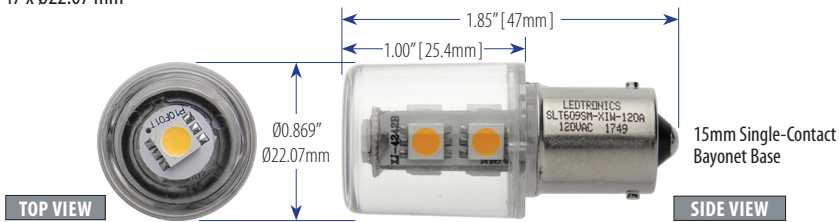


Ba15s
Single-Contact
Bayonet Base

Only 1 Watt, Replaces Xenon & Halogen T2/T3/T4 Tubular Bulbs of up to 15 Watts

STL609SM-XIW-012V

Input Voltage	12VAC	12VDC
Input Power	1.5 Watts	1.0 Watt
Input Current	0.120A	0.075A
Lumens	75 lm	70 lm
Efficacy	50 lm/W	75 lm/W
Max. Candela	10 cd	9 cd
Illumination Angle	360° Omnidirectional	
Emitted Color	Warm White	
Color Temperature	2700K~3000K	
Dimmability	Not Dimmable	
Base	Ba15s, Nickel-Plated Brass	
Lens	Polycarbonate Lexan 101, Clear	
LEDs	7 pcs	
Oper. Temperature	-22°F ~+122°F / -30°C ~+50°C	
Dimensions	1.85 x Ø0.869 inch / 47 x Ø22.07 mm	
Net Weight	0.4 oz / 11.34g	



Ba15d Base
overleaf

LEDTRONICS®

America's Premium Brand LED Company™



© 2021 LEDtronics, Inc.



23105 Kashiwa Court, Torrance, CA 90505
 Phone: (800) 579.4875 / (310) 534.1505
 Fax: (310) 534.1424
 E-mail: info@ledtronics.com
 Website: ledtronics.com

To order LEDtronics products, contact the Distributor or Sales Representative in your area.

Visit our website to find your local Distributor or Representative from our worldwide network:

LEDtronics.com

WWW.LEDTRONICS.COM

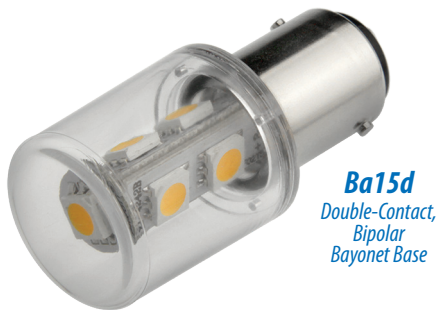
LOG 724 / Rev 09-2021

Check LEDTRONICS.COM for latest data. Printed material may be outdated.

LED Machine Status Indicator & Utility Bulb: 120VAC & 12V AC/DC, Ba15d Base

STL602SM-XIW-120A

Input Voltage	120VAC
Input Power	1.5 Watts
Input Current	0.020A
Lumens	119.32 lm
SCP (Spherical Candela)	9.5 mscp
Efficacy	55 lm/W
Max. Candela	10 cd
Illumination Angle	360° Omnidirectional
Emitted Color	Warm White
Color Temperature	2700K~3000K
Dimmability	Not Dimmable
Base	Ba15d, Nickel-Plated Brass
Lens	Polycarbonate Lexan 101, Clear
LEDs	7 pcs
Oper. Temperature	-22°F ~+122°F / -30°C ~+50°C
Dimensions	1.84 x Ø0.869 inch / 46.7 x Ø22.07 mm
Net Weight	0.4 oz / 11.34g

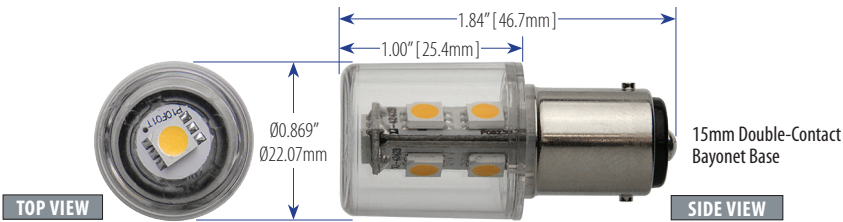


Ba15d
Double-Contact,
Bipolar
Bayonet Base

Only 1.5 Watts, Replaces Xenon & Halogen T2/T3/T4 Tubular Bulbs of up to 15 Watts

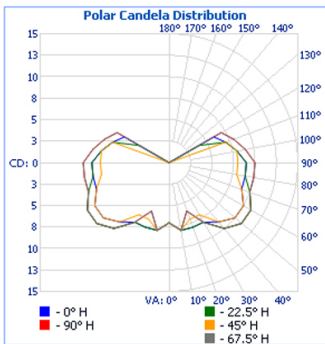
STL602SM-XIW-012V

Input Voltage	12VAC	12VDC
Input Power	1.5 Watts	1.0 Watt
Input Current	0.120A	0.075A
Lumens	75 lm	70 lm
Efficacy	50 lm/W	75 lm/W
Max. Candela	10 cd	9 cd
Illumination Angle	360° Omnidirectional	
Emitted Color	Warm White	
Color Temperature	2700K~3000K	
Dimmability	Not Dimmable	
Base	Ba15d Bipolar, Nickel-Plated Brass	
Lens	Polycarbonate Lexan 101, Clear	
LEDs	7 pcs	
Oper. Temperature	-22°F ~+122°F / -30°C ~+50°C	
Dimensions	1.84 x Ø0.869 inch / 46.7 x Ø22.07 mm	
Net Weight	0.4 oz / 11.34g	



PHOTOMETRIC REPORTS

Filename: STL602SM-XIW-120A
Manufacturer: LEDTRONICS
Luminaire: CLEAR LENS, 1.5W, 120VAC
Lamp Output: 1 lamp, rated Lumens/lamp: 84.8
Max. Candela: 11.0 at Horizontal: 22.5°, Vertical: 50°
Luminous Opening: Point
Test: 5-19-17
Photometry: Type C
CIE Class: Semi-Direct
Cutoff Class: Noncutoff

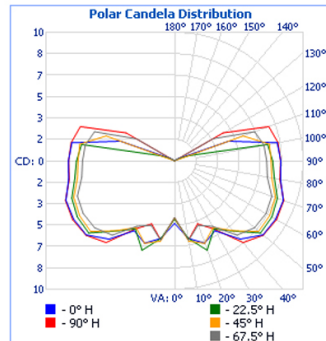


Lumens Per Zone					
Zone	Lumens	% Total	Zone	Lumens	% Total
0-10	0.7	0.9%	90-100	9.5	11.3%
10-20	2.1	2.5%	100-110	8.3	9.8%
20-30	3.4	4.0%	110-120	5.9	6.9%
30-40	5.5	6.5%	120-130	2.0	2.4%
40-50	7.9	9.3%	130-140	0	0%
50-60	9.5	11.2%	140-150	0	0%
60-70	10.0	11.8%	150-160	0	0%
70-80	9.9	11.7%	160-170	0	0%
80-90	10.0	11.7%	170-180	0	0%

Zonal Lumen Summary			
Zone	Lumens	% Lamp	% Luminaire
0-30	6.3	7.4%	7.4%
0-40	11.8	13.9%	13.9%
0-60	29.2	34.4%	34.4%
60-90	29.9	35.3%	35.3%
70-100	29.4	34.7%	34.7%
90-120	23.7	28%	28%
0-90	59.1	69.7%	69.6%
90-180	25.8	30.4%	30.4%
0-180	84.8	100%	100%



Filename: STL602SM-XIW-012V
Manufacturer: LEDTRONICS
Luminaire: CLEAR LENS, 0.9W, 12VDC
Lamp Output: 1 lamp, rated Lumens/lamp: 67.8
Max. Candela: 9.2 at Horizontal: 90°, Vertical: 60°
Luminous Opening: Point
Test: 8-19-16
Photometry: Type C
CIE Class: Semi-Direct
Cutoff Class: Noncutoff



Lumens Per Zone					
Zone	Lumens	% Total	Zone	Lumens	% Total
0-10	0.6	0.8%	90-100	8.3	12.2%
10-20	1.8	2.6%	100-110	6.6	9.7%
20-30	2.9	4.2%	110-120	3.2	4.8%
30-40	4.3	6.3%	120-130	0.7	1%
40-50	6.2	9.2%	130-140	0	0%
50-60	7.7	11.4%	140-150	0	0%
60-70	8.5	12.5%	150-160	0	0%
70-80	8.6	12.7%	160-170	0	0%
80-90	8.4	12.4%	170-180	0	0%

Zonal Lumen Summary			
Zone	Lumens	% Lamp	% Luminaire
0-30	5.2	7.7%	7.7%
0-40	9.5	14%	14%
0-60	23.5	34.6%	34.6%
60-90	25.5	37.7%	37.7%
70-100	25.3	37.3%	37.3%
90-120	18.1	26.7%	26.7%
0-90	49.0	72.3%	72.3%
90-180	18.8	27.7%	27.7%
0-180	67.8	100%	100%