



# Right-Angled LED Retrofit Paddle Lamps

28, 36 & 54 Watts – 100~277VAC – 3000K & 5000K White – 90°x150° Beam – Rotating E26 Base – UL



## FEATURES

- 5 Year LEDtronics Warranty
- Energy Savings up to 85% over HID Lamps
- High Lumen, 90°x150° Type III Oval Beam
- Lumen Maintenance over 70% @ 50,000 Hours
- Adjustable E26 Base Rotates 270 Degrees
- Usable in Enclosed Luminaires
- Internal Driver, Wide Input-Voltage Range
- No UV/IR, No Mercury or Lead, ROHS Compliant
- Solid State – High Shock/Vibration Resistant
- UL/cUL Listed & Classified

## APPLICATIONS

- Street Cobraheads
- Shoebox Luminaires
- Canopies & Wall Packs
- Security Flood Lighting

## AVAILABLE OPTIONS

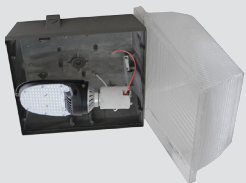
- Other CCT Colors: 2700K to 6500K
- E39 Mogul Base

Over 35 Years of LEDtronics Design, Engineering & Manufacturing Experience

LED LM79 Reports on File

### APPLICATIONS

Fits Various Fixtures to Replace Traditional MH & HPS Lamps



For Optimum Performance, Minimum Cavity Space: 17.3" x 10.2" x 10.2" (440 x 260 x 260mm)



E26 Rotating Base

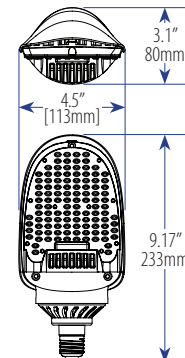
Horizontal Orientation Only, Facing Downward



TOP VIEW

**LEDRA36-027WE26-XPW-101A** (28 Watts, replaces MH/HPS up to 70W, 5000K)  
**LEDRA36-036WE26-XPW-101A** (36 Watts, replaces MH/HPS up to 100W, 5000K)  
**LEDRA36-054WE26-XPW-101A** (52 Watts, replaces MH/HPS up to 175W, 5000K)  
**LEDRA36-054WE26-XIW-101A** (54 Watts, replaces MH/HPS up to 175W, 3000K)

	027W	036W	054W-XPW	054W-XIW
<b>Input Power</b>	28 Watts	36 Watts	52 Watts	54 Watts
<b>Input Voltage</b>	100~277VAC (Tested @ 120VAC)			
<b>Input Current</b>	0.23A	0.30A	0.44A	0.454A
<b>Total Lumens</b>	3386 lm	3837 lm	6099 lm	5772 lm
<b>Efficacy</b>	122 lm/W	108 lm/W	116 lm/W	106 lm/W
<b>Max. Candela</b>	1652 cd	1706 cd	3271 cd	2609 cd
<b>Power Factor</b>	0.99	0.99	0.99	1.0
<b>Emitted Color</b>	Pure White			Warm White
<b>Color Temp.</b>	5000K			3000K
<b>CRI</b>	73	73	73	>70
<b>Beam Angle</b>	90°x150°			
<b>Housing</b>	Magnesium Alloy & Aluminum / Black & Silver			
<b>Lens</b>	Polycarbonate, Type III, Clear			
<b>Dimmability</b>	Not Dimmable			
<b>Base</b>	E26 Medium Screw, Rotates 270 Degrees			
<b>Oper. Temp.</b>	-4°F ~ +113°F / -20°C ~ +45°C			
<b>Protection Rating</b>	IP51, UL Damp Listed			
<b>Dimensions</b>	L9.2 x W4.5 x H3.1 inch / L233 x W113 x H80 mm			
<b>Weight</b>	1.51 lbs / 0.69 kg		1.63 lbs / 0.74 kg	



# LEDTRONICS®

America's Premium Brand LED Company™



© 2018 LEDtronics, Inc.



23105 Kashiwa Court, Torrance, CA 90505  
 Phone: (800) 579.4875 / (310) 534.1505  
 Fax: (310) 534.1424  
 E-mail: info@ledtronics.com  
 Website: ledtronics.com

To order LEDtronics products, contact the Distributor or Sales Representative in your area.

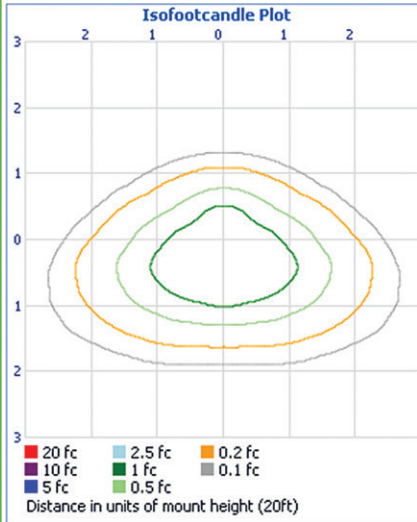
Visit our website to find your local Distributor or Representative from our worldwide network:  
**LEDtronics.com**

WWW.LEDTRONICS.COM

LOG 715 / Rev 07-2018

Check LEDTRONICS.COM for latest data. Printed material may be outdated.

## LEDRA36-027WE26-XPW-101A

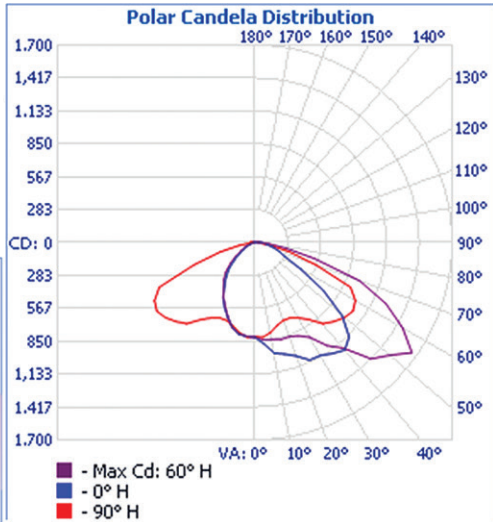


**Filename:** LEDRA36-027WE26-XPW-101A  
**Manufacturer:** LEDTRONICS  
**Luminaire:** DROP LENS,27.8W,120VAC  
**Lamp Output:** 1 lamp, rated Lumens/lamp: 3386  
**Max Candela:** 1,652.0 at Horizontal: 60°, Vertical: 55°  
**Luminous Opening:** Point  
**Test:** 5-23-17  
**Photometry:** Type C  
**CIE Class:** Direct  
**Cutoff Class:** Cutoff  
**Nema Type:** 7 X 6

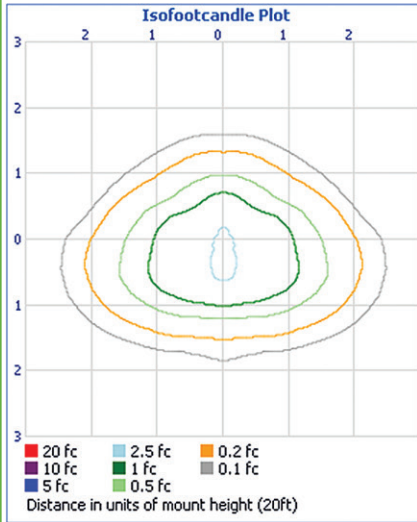
**Illuminance at a Distance**

	Center Beam fc	Beam Width	
4.0R	50.9 fc	5.3 ft	20.0 ft
8.0R	12.7 fc	10.6 ft	39.9 ft
12.0R	5.7 fc	15.9 ft	59.9 ft
16.0R	3.2 fc	21.2 ft	79.9 ft
20.0R	2.0 fc	26.4 ft	99.9 ft

Vert. Spread: 66.9° Horiz. Spread: 136.3°



## LEDRA36-036WE26-XPW-101A

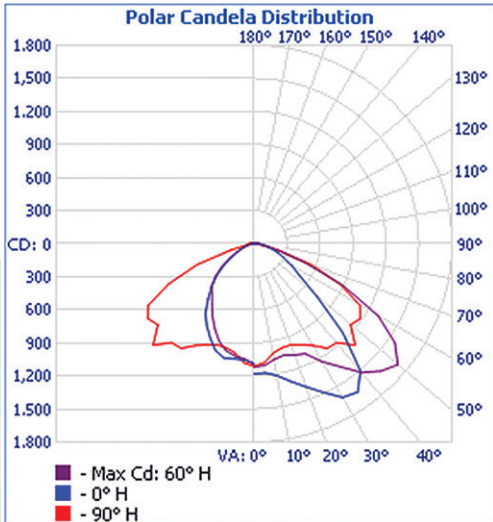


**Filename:** LEDRA36-036WE26-XPW-101A  
**Manufacturer:** LEDTRONICS  
**Luminaire:** DROP LENS,35.5W,120VAC  
**Lamp Output:** 1 lamp, rated Lumens/lamp: 3837.1  
**Max Candela:** 1,706.0 at Horizontal: 60°, Vertical: 50°  
**Luminous Opening:** Point  
**Test:** 5-23-17  
**Photometry:** Type C  
**CIE Class:** Direct  
**Cutoff Class:** Cutoff  
**Nema Type:** 7 X 6

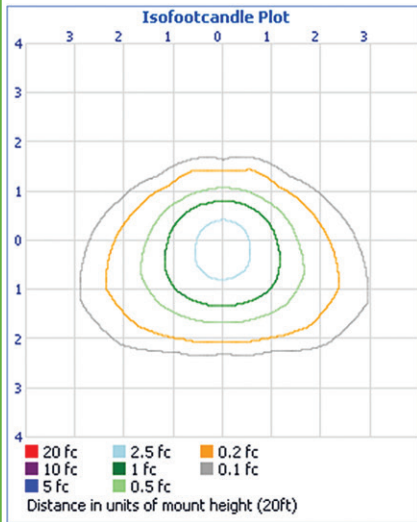
**Illuminance at a Distance**

	Center Beam fc	Beam Width	
4.0R	73.8 fc	5.9 ft	16.3 ft
8.0R	18.4 fc	11.9 ft	32.7 ft
12.0R	8.2 fc	17.8 ft	49.0 ft
16.0R	4.6 fc	23.8 ft	65.4 ft
20.0R	3.0 fc	29.7 ft	81.7 ft

Vert. Spread: 73.3° Horiz. Spread: 127.8°



## LEDRA36-054WE26-XPW-101A



**Filename:** LEDRA36-054WE26-XPW-101A  
**Manufacturer:** LEDTRONICS  
**Luminaire:** DROP LENS,52.4W,120VAC  
**Lamp Output:** 1 lamp, rated Lumens/lamp: 6098.7  
**Max Candela:** 2,081.0 at Horizontal: 337.5°, Vertical: 41°  
**Luminous Opening:** Point  
**Test:** 5-23-17  
**Photometry:** Type C  
**CIE Class:** Direct  
**Cutoff Class:** Cutoff  
**Nema Type:** 7 X 7

**Illuminance at a Distance**

	Center Beam fc	Beam Width	
4.0R	96.6 fc	9.1 ft	20.4 ft
8.0R	24.1 fc	18.1 ft	40.9 ft
12.0R	10.7 fc	27.2 ft	61.3 ft
16.0R	6.0 fc	36.3 ft	81.8 ft
20.0R	3.9 fc	45.3 ft	102.2 ft

Vert. Spread: 97.1° Horiz. Spread: 137.2°

