



LED High Lumen Post Top Lamp, 90W

Replaces HP Lamps up to 400 Watts – 5000K White – E39 Base



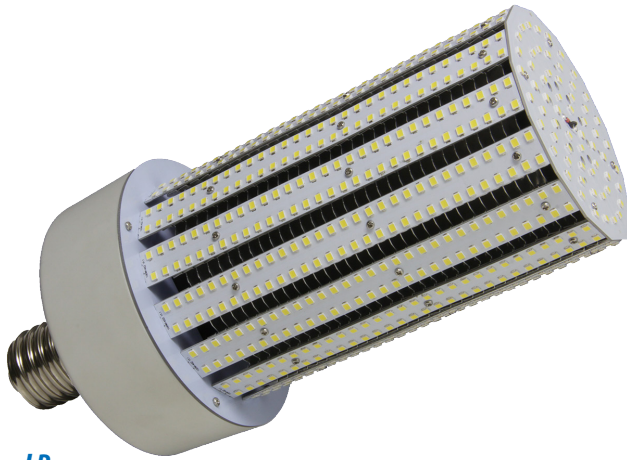
FEATURES

- 3 Year LEDtronics Warranty
- Energy Savings up to 80%
- Lower Price, Higher Lumen, Higher CRI
- Lumen Maintenance over 70% @ 50,000+ Hours
- Operates on 90~305VAC
- No UV/IR, No Mercury or Lead, ROHS Compliant
- Solid State – High Shock/Vibration Resistant
- LED LM80 Report Available
- UL Listed Driver (E334367)

APPLICATIONS

- Outdoor & Covered Parking Areas
- Driveway & Walkway Lighting
- Security Lighting
- Parks / Playgrounds
- Railroad Station Platforms
- Pendant Lighting
- Globe & Post Top Lighting

More than 30 Years of LEDtronics Design, Engineering & Manufacturing Experience



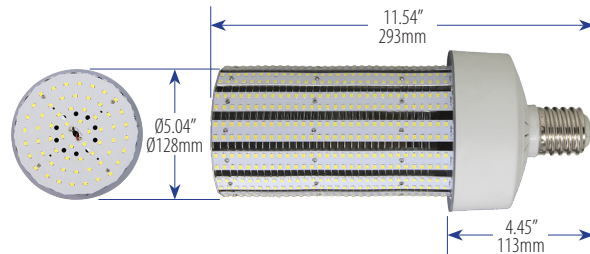
E39 Mogul Base



UL Listed Driver
L7.71 x W2.46 x H1.59 in
L195.8 x W62.5 x H40.5 mm

LED40MH-100W-XPW-201

Input Power	90 Watts
Input Voltage	90~305VAC (Tested @ 120VAC)
Total Lumens	10870 lm
Max. Candela	1100 cd
Power Factor	0.99
Efficacy	120 lm/W
CRI	>80
Emitted Color	Pure White
Color Temperature	5000K~5600K
Illumination Angle	120° x 360°
Oper. Temperature	-40°F ~ +113°F / -40°C ~ +45°C
Base	E39
Body Material	Polycarbonate / White
Dimensions	L11.54 x WØ5.04 inch L293 x WØ128 mm
Net Weight	1.41 lbs / 22.6 oz / 0.64 kg



LEDTRONICS®

Creating the Future of LED Light Since 1983™



© 2014 LEDtronics, Inc.

23105 Kashiwa Court, Torrance, CA 90505
Phone: (800) 579.4875 / (310) 534.1505
Fax: (310) 534.1424
E-mail: info@ledtronics.com
Website: ledtronics.com

To order LEDtronics products,
contact the Distributor or Sales Representative in your area.

Visit our website to find your local Distributor or Representative from our worldwide network:

LEDTRONICS.COM

LED High-Lumen Post Top Lamp, 90 Watts, E39 Base

PHOTOMETRIC REPORT:

LED40MH-100W-XPW-201

Filename: LED40MH-100W-XPW-201

Manufacturer: LEDTRONICS

Luminaire: NO LENS, 120VAC, 91.5W

Luminaire Cat: LED40MH-100W-XPW-201

Lamp: . LUMEN RATING: 10866.6 Lms.

Lamp Output: 1 lamp(s), rated Lumens/lamp: 10866.6

Max Candela: 1,100.0 at Horizontal: 0°, Vertical: 75°

Luminous Opening: Point

Test: 7-23-14

Photometry : Type C

CIE Class: General Diffuse

Cutoff Class: Noncutoff

Lumens Per Zone

Zone	Lumens	% Total	Zone	Lumens	% Total
0-10	30.1	0.3%	90-100	1,168.0	10.7%
10-20	127.4	1.2%	100-110	1,083.6	10%
20-30	288.3	2.7%	110-120	922.2	8.5%
30-40	492.9	4.5%	120-130	729.0	6.7%
40-50	709.6	6.5%	130-140	514.0	4.7%
50-60	908.4	8.4%	140-150	309.1	2.8%
60-70	1,062.9	9.8%	150-160	143.6	1.3%
70-80	1,153.7	10.6%	160-170	38.5	0.4%
80-90	1,182.9	10.9%	170-180	2.5	0%

Illuminance at a Distance

	Center Beam FC	Beam Width
1.7ft	93.96 fc	5.8ft
3.3ft	23.49 fc	11.7ft
5.0ft	10.44 fc	17.5ft
6.7ft	5.87 fc	23.3ft
8.3ft	3.76 fc	29.1ft
10.0ft	2.61 fc	35.0ft

■ Beam Spread: 120.5°

