



LED Modular Street/Area Light, 329W

Can Replace 720W to 1000 Watts HID – Dimmable – 100~277VAC – 5000K



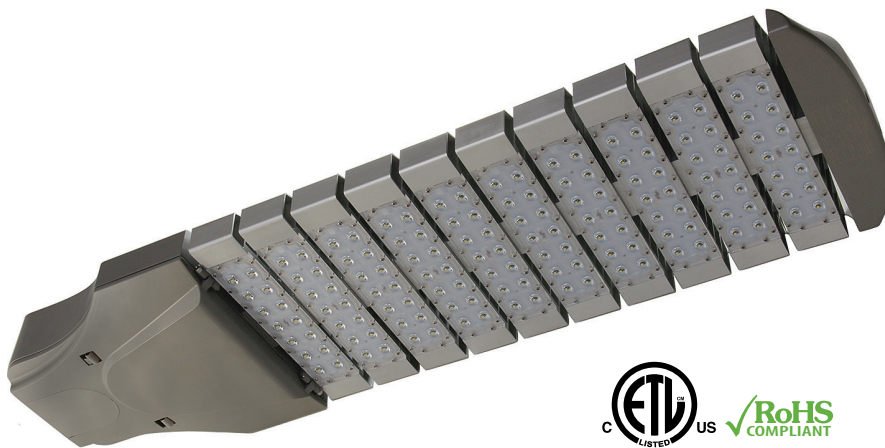
FEATURES

- 5 Year LEDtronics Warranty
- Energy Savings up to 85%
- Dimmable from 15 to 100% of Maximum Brightness
- Lumen Maintenance over 70% @ 50,000+ Hrs
- IESNA Type III Pattern (Type II Available) / Full Cutoff
- Photocell Receptacle & Cap Included / Tool-less Entry
- ETL/cETL Listed / RoHS Compliant / IP66

APPLICATIONS

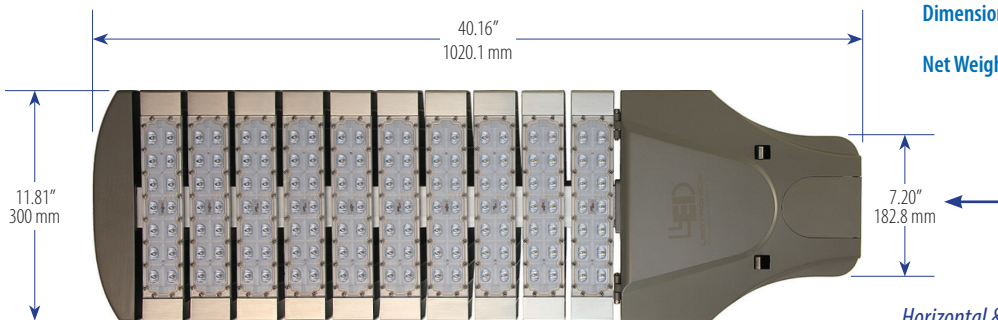
- Street and Highway Lighting
- Outdoor Parking Areas Lighting
- Driveway & Walkway Lighting
- Area Flood Lighting
- Security Lighting
- Construction Lighting
- Tennis Courts & Stadiums
- Parks / Playgrounds

Over 30 Years of LEDtronics Design, Engineering & Manufacturing Experience



SLM010-310W-XPW-101A3

Input Power	329 Watts
Input Voltage	100~277VAC (Tested @ 120VAC)
Input Current	2.75A
Total Lumens	32700 lm
Max. Candela	16000 cd
Power Factor	1.0
Efficacy	99 lm/W
Light Pattern	IESNA Type III (Type II with tilt)
CRI	>70
Emitted Color	Pure White
Color Temperature	5000~5600K
Dimmability	0-10V
Safety Rating	IP66
Oper. Temperature	-40°C ~+55°C
Housing	Aluminum Alloy / Gray Marine Grade
Dimensions	L40.16 x W11.81 x H5.31 inch L1020 x W300 x H135 mm
Net Weight	35 lbs / 15.9 kg



BOTTOM VIEW

Horizontal & Vertical Mountable
Pole Diameters
Ø1.65 to Ø2.99 inch (Ø42 to Ø76 mm)



LEDTRONICS®

Creating the Future of LED Light Since 1983™



© 2015 LEDtronics, Inc.



23105 Kashiwa Court, Torrance, CA 90505
 Phone: (800) 579.4875 / (310) 534.1505
 Fax: (310) 534.1424
 E-mail: info@ledtronics.com
 Website: ledtronics.com

Option Available for Made in USA ARRA Compliance



To order LEDtronics products, contact the Distributor/Sales Representative in your area.

Visit our website to find your local Distributor or Representative from our worldwide network:

LEDTRONICS.COM

LED Modular Street/Area Light – 329 Watts

PHOTOMETRIC REPORT

Filename: SLM010-310W-XPW-101A3

Manufacturer: LEDTRONICS -
 Luminaire: 120VAC,316W
 Luminaire Cat: SLM010-310W-XPW-101A3
 Lamp: . LUMEN RATING: 27057.3Lms.
 Lamp Output: 1 lamp(s), rated Lumens/lamp: 27057.3
 Max Candela: 14,320.0 at Horizontal: 60°, Vertical: 70°
 Luminous Opening: Point
 Test: 5-30-13
 Photometry : Type C
 CIE Class: Direct
 Nema Type: 7 X 7

Roadway Summary

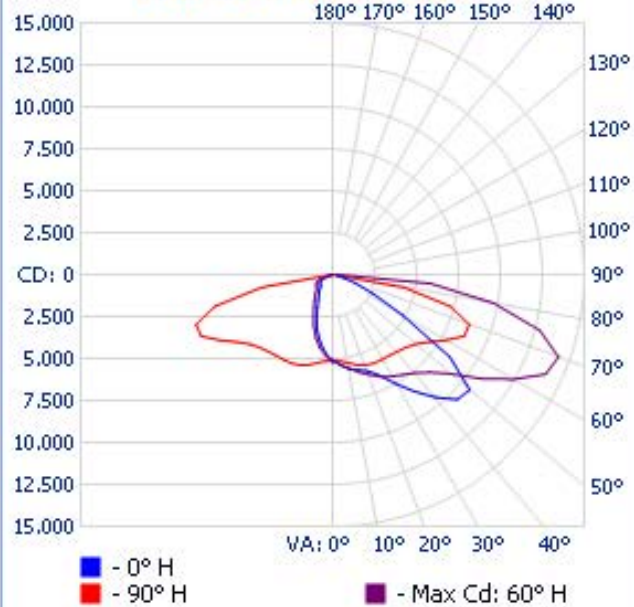
Cutoff Classification:	NONCUTOFF
Distribution:	TYPE III, MEDIUM
Max Cd, 90 Deg Vert:	388.0
Max Cd, 80 to <90 Deg:	9,748.0
	Lumens % Lamp
Downward Street Side:	19,937.8 73.7%
Downward House Side:	7,121.2 26.3%
Downward Total:	27,059.0 100%
Upward Street Side:	0 0%
Upward House Side:	0 0%
Upward Total:	0 0%
Total Lumens:	27,059.0 100%

Illuminance at a Distance

	Center Beam FC	Beam Width	
4.0ft	314.00 fc	5.8ft	19.8ft
8.0ft	78.50 fc	11.5ft	39.6ft
12.0ft	34.89 fc	17.3ft	59.4ft
16.0ft	19.63 fc	23.1ft	79.2ft
20.0ft	12.56 fc	28.9ft	99.0ft
24.0ft	8.72 fc	34.6ft	118.8ft

■ Vert. Spread: 71.6° ■ Horiz. Spread: 136.0°

Polar Candela Distribution



Isofootcandle Plot

