



LED Modular Street/Area Light, 215W

Can Exceed 400 Watt HID – Dimmable – 100~277VAC – 5000K



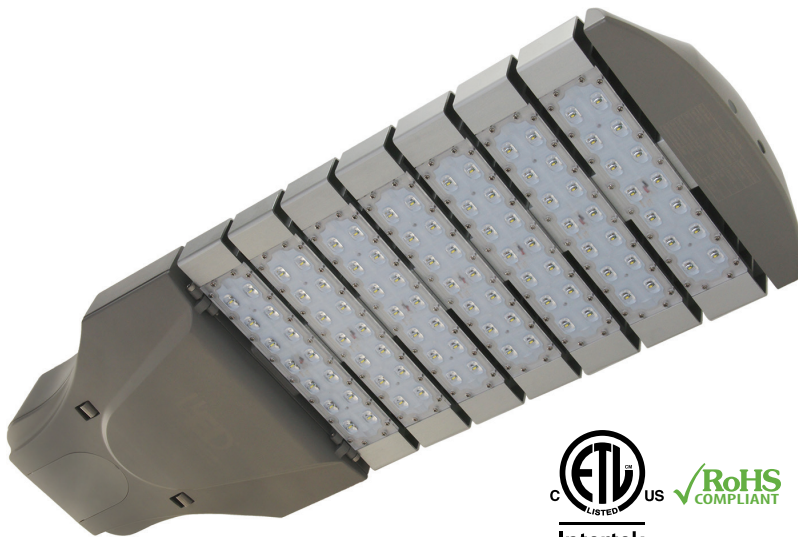
FEATURES

- 5 Year LEDtronics Warranty
- Energy Savings up to 85%
- Dimmable from 15 to 100% of Maximum Brightness
- Over 50,000 Hour White LED, Lumen Maintenance over 70%
- IESNA Type III Pattern (Type II Available) / Full Cutoff
- Photocell Receptacle & Cap Included / Tool-less Entry
- ETL/cETL Listed / RoHS Compliant / IP66

APPLICATIONS

- Street and Highway Lighting
- Outdoor Parking Areas Lighting
- Driveway & Walkway Lighting
- Area Flood Lighting
- Security Lighting
- Construction Lighting
- Tennis Courts & Stadiums
- Parks / Playgrounds

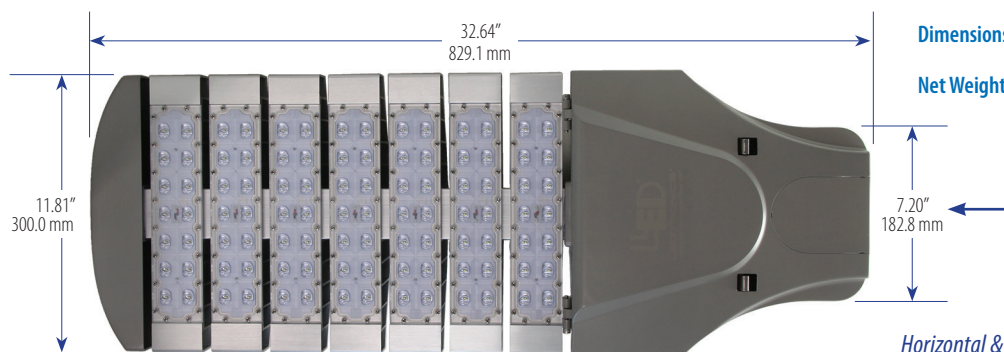
Over 30 Years of LEDtronics Design, Engineering & Manufacturing Experience



SLM007-220W-XPW-101A3

Input Power	215 Watts
Input Voltage	120~277VAC (Tested @ 120VAC)
Input Current	1.792A
Total Lumens	17874 lm
Max. Candela	9896 cd
Power Factor	1.0
Efficacy	83 lm/W
Light Pattern	IESNA Type III (Type II with tilt)
CRI	>70
Emitted Color	Pure White
Color Temperature	5000~5600K
Dimmability	0-10V
Safety Rating	IP66
Oper. Temperature	-40°C ~+55°C
Housing	Aluminum Alloy / Gray Marine Grade

Dimensions	L32.64 x W11.81 x H5.31 inch L829 x W300 x H135 mm
Net Weight	27.5 lbs / 12.5 kg



BOTTOM VIEW

Horizontal & Vertical Mountable
Pole Diameters
Ø1.65 to Ø2.99 inch (Ø42 to Ø76 mm)



LEDTRONICS®

Creating the Future of LED Light Since 1983™



© 2015 LEDtronics, Inc.



23105 Kashiwa Court, Torrance, CA 90505
 Phone: (800) 579.4875 / (310) 534.1505
 Fax: (310) 534.1424
 E-mail: info@ledtronics.com
 Website: ledtronics.com

Option Available for Made in USA ARRA Compliance



To order LEDtronics products, contact the Distributor/Sales Representative in your area.

Visit our website to find your local Distributor or Representative from our worldwide network:

LEDTRONICS.COM

LED Modular Street/Area Light – 215 Watts

PHOTOMETRIC REPORT

Filename: SLM007-220W-XPW-101A3

Manufacturer: LEDTRONICS -
 Luminaire: 120VAC, 220W
 Luminaire Cat: SLM007-220W-XPW-101A3
 Lamp: . LUMEN RATING: 17874.3Lms.
 Lamp Output: 1 lamp(s), rated Lumens/lamp: 17874.3
 Max Candela: 9,896.0 at Horizontal: 60°, Vertical: 70°
 Luminous Opening: Point
 Test: 6-4-13
 Photometry : Type C
 CIE Class: Direct
 Nema Type: 7 X 7

Roadway Summary

Cutoff Classification:	NONCUTOFF	
Distribution:	TYPE III, MEDIUM	
Max Cd, 90 Deg Vert:	200.0	
Max Cd, 80 to <90 Deg:	7,256.0	
	Lumens	% Lamp
Downward Street Side:	12,911.0	72.2%
Downward House Side:	4,963.3	27.8%
Downward Total:	17,874.3	100%
Upward Street Side:	0	0%
Upward House Side:	0	0%
Upward Total:	0	0%
Total Lumens:	17,874.3	100%

Illuminance at a Distance

	Center Beam FC	Beam Width	
4.0ft	202.13 fc	5.7ft	3.0ft
8.0ft	50.53 fc	11.3ft	6.0ft
12.0ft	22.46 fc	17.0ft	9.0ft
16.0ft	12.63 fc	22.7ft	12.0ft
20.0ft	8.09 fc	28.3ft	15.0ft
24.0ft	5.61 fc	34.0ft	18.0ft

■ Vert. Spread: 70.6° ■ Horiz. Spread: 41.2°

