



LED Modular Street/Area Light, 284W

Can Exceed 400 Watts HID – Dimmable – 100~277VAC – 5000K



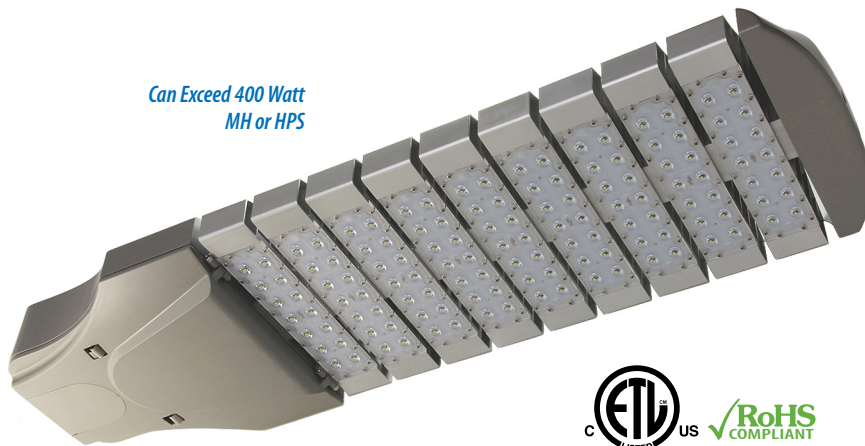
FEATURES

- 5 Year LEDtronics Warranty
- Energy Savings up to 85%
- Dimmable from 15 to 100% of Maximum Brightness
- Over 50,000 Hour White LED, Lumen Maintenance over 70%
- IESNA Type III Pattern (Type II Available) / Full Cutoff
- Photocell Receptacle & Cap Included / Tool-less Entry
- ETL/cETL Listed / RoHS Compliant / IP66

APPLICATIONS

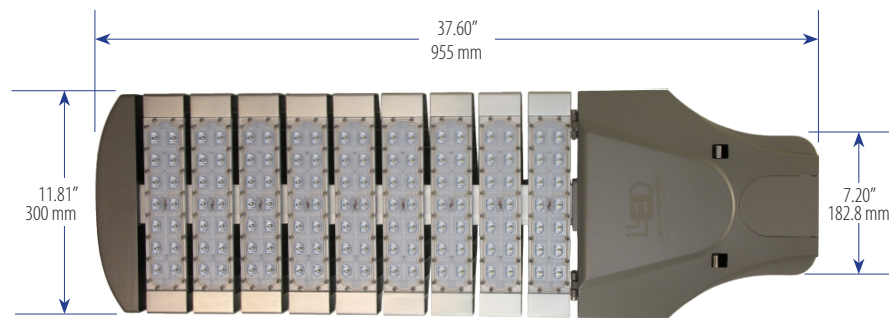
- Street and Highway Lighting
- Outdoor Parking Areas Lighting
- Driveway & Walkway Lighting
- Area Flood Lighting
- Security Lighting
- Construction Lighting
- Tennis Courts & Stadiums
- Parks / Playgrounds

Over 30 Years of LEDtronics Design, Engineering & Manufacturing Experience



SLM009-280W-XPW-101A3

Input Power	284 Watts
Input Voltage	100~277VAC (Tested @ 120VAC)
Input Current	2.35A
Total Lumens	26600 lm
Max. Candela	14000 cd
Power Factor	1.0
Efficacy	94 lm/W
Light Pattern	IESNA Type III (Type II with tilt)
CRI	>70
Emitted Color	Pure White
Color Temperature	5000~5600K
Dimmability	0-10V
Safety Rating	IP66
Oper. Temperature	-40°C ~ +55°C
Housing	Aluminum Alloy / Gray Marine Grade
Dimensions	L37.60 x W11.81 x H5.31 inch L955 x W300 x H135 mm
Net Weight	32.3 lbs / 14.7 kg



BOTTOM VIEW

Horizontal & Vertical Mountable Pole Diameters Ø1.65 to Ø2.99 inch (Ø42 to Ø76 mm)



LEDTRONICS®

Creating the Future of LED Light Since 1983™



© 2015 LEDtronics, Inc.



23105 Kashiwa Court, Torrance, CA 90505
 Phone: (800) 579.4875 / (310) 534.1505
 Fax: (310) 534.1424
 E-mail: info@ledtronics.com
 Website: ledtronics.com

Option Available for Made in USA ARRA Compliance



To order LEDtronics products, contact the Distributor/Sales Representative in your area.

Visit our website to find your local Distributor or Representative from our worldwide network:

LEDTRONICS.COM

LED Modular Street/Area Light – 284 Watts

PHOTOMETRIC REPORT

Luminaire Photometric Report

Filename: SLM009-280W-XPW-101A3

Manufacturer: LEDTRONICS -

Luminaire: 120VAC,276.2W

Luminaire Cat: SLM009-280W-XPW-101A3

Lamp: . LUMEN RATING: 22300Lms.

Lamp Output: 1 lamp(s), rated Lumens/lamp: 22300

Max Candela: 12,436.0 at Horizontal: 60°, Vertical: 70°

Luminous Opening: Point

Test: 5-31-13

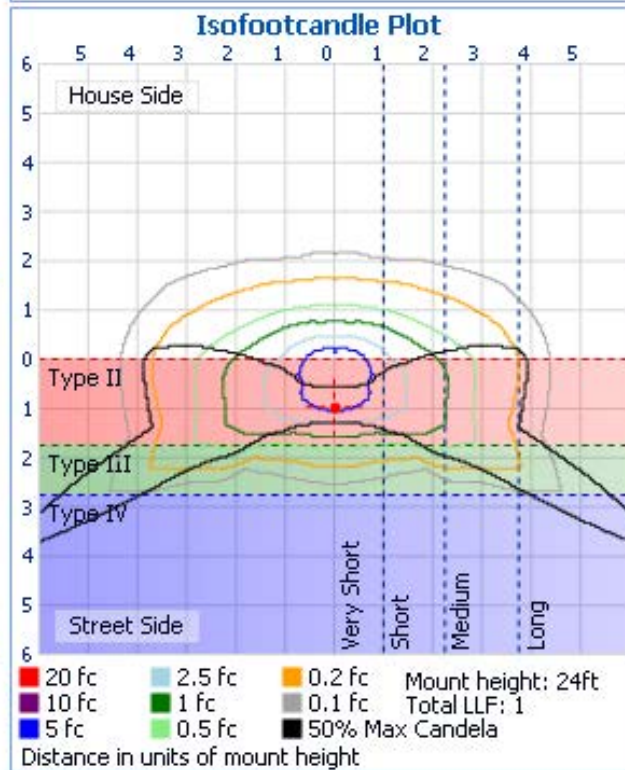
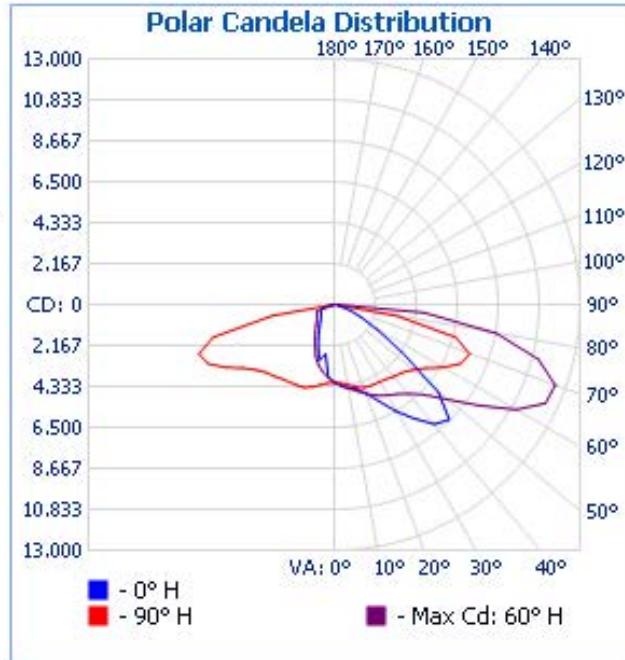
Photometry : Type C

CIE Class: Direct

Nema Type: 7 X 7

Roadway Summary

Cutoff Classification:	NONCUTOFF	
Distribution:	TYPE III, MEDIUM	
Max Cd, 90 Deg Vert:	220.0	
Max Cd, 80 to <90 Deg:	8,696.0	
	Lumens	% Lamp
Downward Street Side:	15,940.0	71.5%
Downward House Side:	6,360.0	28.5%
Downward Total:	22,299.9	100%
Upward Street Side:	0	0%
Upward House Side:	0	0%
Upward Total:	0	0%
Total Lumens:	22,299.9	100%



Illuminance at a Distance

Height	Center Beam FC	Beam Width	Beam Width
4.0ft	253.00 fc	5.0ft	19.6ft
8.0ft	63.25 fc	10.0ft	39.2ft
12.0ft	28.11 fc	15.0ft	58.8ft
16.0ft	15.81 fc	20.1ft	78.5ft
20.0ft	10.12 fc	25.1ft	98.1ft
24.0ft	7.03 fc	30.1ft	117.7ft

■ Vert. Spread: 64.2° ■ Horiz. Spread: 135.6°