



Solar-Powered LED 12V/5-Bulb Lighting System / 100W

SLR002-100W-TPW-001

Clean, Renewable Off-Grid High-Intensity Light Source for Off-Grid Environments

Complete System: From Sunlight to Bulb Light — Up to 6 Hours of Continuous Illumination per Full Charge

SYSTEM INCLUDES

Everything needed to convert sunlight to electricity for lighting:

- **Solar Panel:** 100-Watt / IP65
- **Cables:** (5) 20-ft/18 ga. with (5) Light Sockets
(2) 20-ft/18 ga. w/ Cigarette Lighter Connector
(1) 12-inch/18 ga. w/Cellphone Charge Conn.
(1) 6-ft/12 ga. battery cable
- **Solar Power Box** with Charge Controller
- **Lamps:** (5) 12/14VDC White LED Floodlights

OPTIONAL ACCESSORIES

- **Battery:** 12V / 35-Amp-hour / Sealed
- **Fan:** 10 inch (254.0mm) / 12VDC / 1.75A Max
21 Watts Max

SPECIFICATIONS

SPECIFICATIONS SUBJECT TO CHANGE WITHOUT NOTICE

PART NUMBER	SLR002-100W-TPW-001
PV MODULE / SOLAR PANEL	
Cell Type	Monocrystalline
Frame Material	Anodized Aluminum Alloy
Front Cover	Tempered Glass
Maximum Power (P_{max})	135 W typ @ 1000W/m ²
Working Voltage (V_{max})	12V-17V
Max. Power Current (I_{max})	9.0A
Open Circuit Voltage (V_{oc})	22.0V
Short Circuit Current (I_{sc})	9.2A
Dimensions	41.10" x 38.90" x 1.08" 1043.9 x 988.0 x 27.4mm
Weight	24.53 lbs / 11.15 kg
Environmental Rating	IP65 (Protected from Dust & Rain)
LAMPS	
Emitted Color	True White
Color Temperature	4800K-5200K
Viewing Angle	5 x 40° <small>[Full Beam Width @50% Intensity]</small>
Input Voltage	12-14VDC
Input Current	422mA
Input Power	5 Watts
Efficacy	82 lm/W
Maximum Candela	680 cd
Total Lumens	410 lm



RECOMMENDED BATTERY

- Rechargeable Sealed Lead Acid / 12V / 35Ah
- 1000~2000 Charge/Discharge Cycles – Lifespan of up to 6 Years

SOLAR POWER BOX

- 12 AWG Wiring, Terminal Block, Voltage Regulator with Low-Voltage Disconnect
- 15 Amps Maximum Current
- **Autoswitching** 12/24VDC
- **Fused** for Protection
- **Charge Time:** 8 Hrs. in Sunlight
- **Operational Time:** Up to 6 Hrs. with 5 Lamps, 2 10-inch Fan, 1 Cell Phone Charger
- **Battery Overcharge and Overdischarge Protection**
- **RCA Jacks:** 12VDC – Power (5) Light Sockets, (1) Cellphone Charger, (2) Fans

CELLPHONE CHARGE CONNECTORS

- (3) Cigarette Lighter Connectors: (1) 12-ft, (2) 20-ft
- 0.3A Max

CUSTOM OPTIONS

- Larger Sized Solar Panels Available
- Larger Sized Batteries
- Optional 12-Volt Lamp Styles
- Other White Light Color Temperatures

FEATURES

- **Kit Warranty:** 1 Year
- 12V Power Connectors for **5 Lamps, 2 Fans & 1 Cellphone Charging Adapter**
- Solar Panel Meets **IP65** for Environmental Protection from Dust & Rain
- **ON/OFF Switch-Selectable** for Lamps & Solar Panel Charge
- Houses Charge Controller and Battery
- Battery Lasts 3 to 6 Years

APPLICATIONS

- **Emergency:** Roving Blackouts or Power Outage Home Backup Lighting
- **Off-Grid Sites:** Remote Cabins, Offshore Oil Platforms
- **Marine & Boating**
- **Recreational Vehicle or Motor Homes / Cabins**
- **Disasters:** Earthquake and Hurricane Emergency Kits

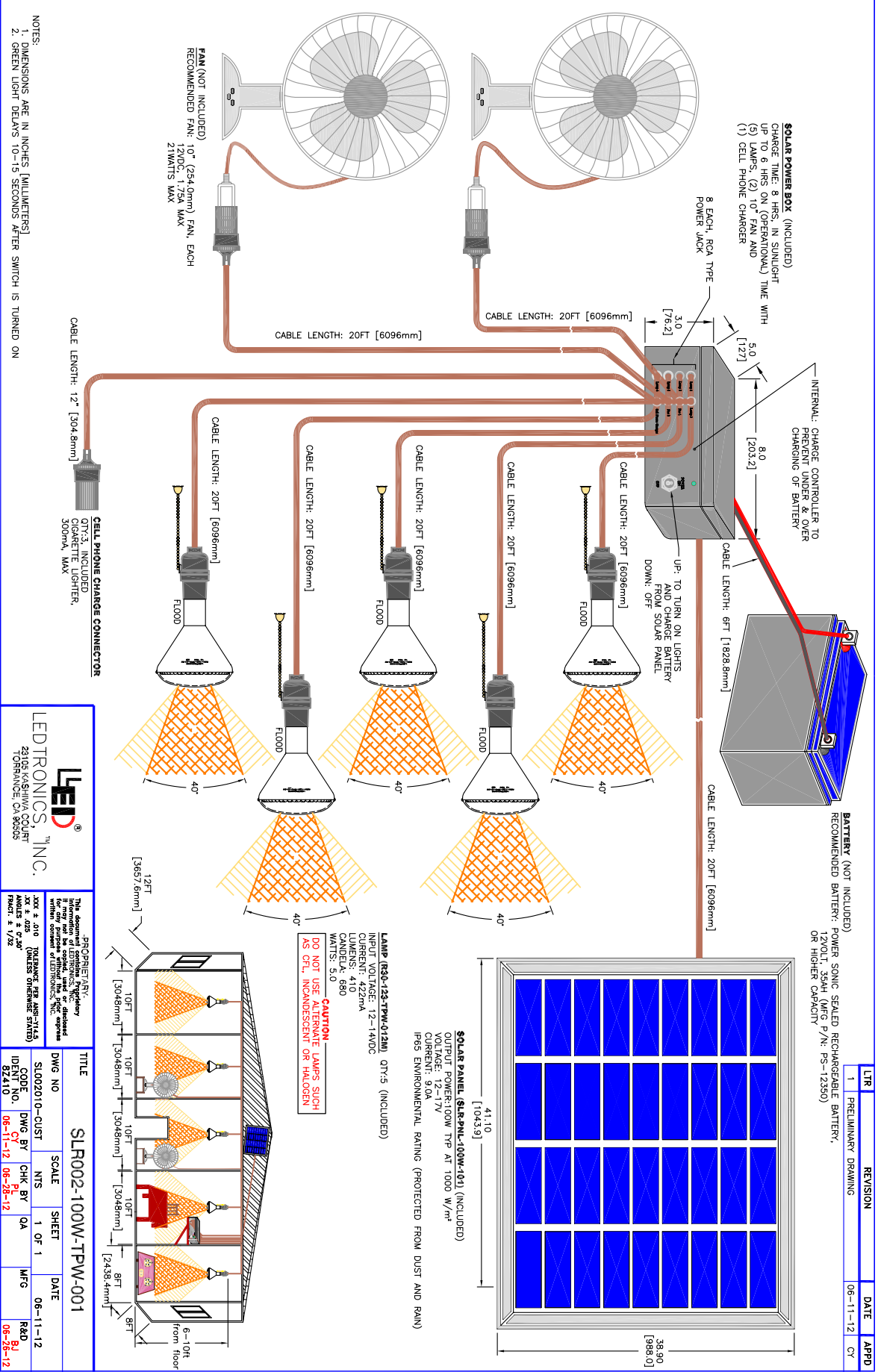
White LED technology is patent protected in the United States.

LEDtronics white LED products are covered under these patents.

BENEFITS

- **Major Energy Cost Savings:** Solar-Rechargeable Battery Offers Utility-Independence
- Fully-Charged Battery Powers 5 High-Intensity Lamps, 2 Large Fans & Charges 1 Cellphone for Approx. 6 Hours
- **Eco-Friendly:** Solar-Rechargeable Battery Eliminates Environmental Impact Associated with One-Time-Use Batteries
- **Easy & Quick to Install** and Virtually Maintenance-Free
- **Eliminates Hazards** (Fires, Burns, Fumes, Spills and Explosions) and Fuss of Using Propane or Kerosene-Fueled Lighting
- **Clean, Green Energy** from the Sun: Using LED Lamps with Renewable Energy Sources Helps Reduce Reliance on Fossil Fuels





LTR	REVISION	DATE	APPD
1	PRELIMINARY DRAWING	06-11-12	CR

LEDTRONICS, INC.
2315 KASSEL BLVD
FORSYTH, GA 30054

DISCLAIMER:
This document contains proprietary information of LEDtronics, Inc. and is intended for use only by the customer. It is not to be reproduced, stored in a retrieval system, or transmitted in any form or by any means, electronic, mechanical, photocopying, recording, or by any information storage and retrieval system, without the prior written permission of LEDtronics, Inc.

DWG NO	SCALE	SHEET	DATE
SLR002010-CUST	N/A	1 OF 1	06-11-12
ID CODE	CHK BY	QA	MFG
827410	06-11-12	06-28-12	R&D
			06-28-12

TITLE SLR002-100W-TPW-001

- NOTE**
- Writing and bulb sockets are not rated for outdoor use. These devices are subject to corrosion if left outdoors.
 - Do not use alternate lamps such as CFL, incandescent or halogen
 - Green light delays 10-15 seconds after switch is turned on
- When charging a cell phone with the Solar Kit, the user will need to provide a POWER ADAPTER used to convert 12-volt automotive power to their cell phone's power needs, typically 5V with a Micro-USB plug.