



LED Post-Top Compact Luminaires for Acorns / Globes / Bollards

LED28MH-24X2W-XPW-00x

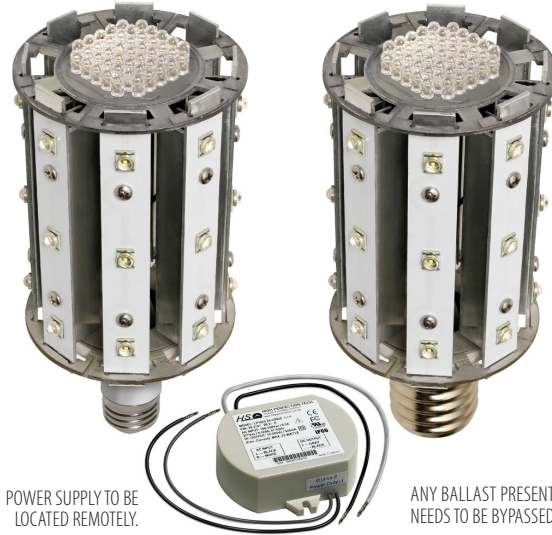


Direct Plug-in Lamp Replacement for 50-to-70 Watt MH/HPS Fixtures — Consumes Only 20 Watts

100~277VAC — 5000K White — E26 or E39 Screw-in Base — Recommended Mounting Height: 10 ft

FEATURES

- **Lamp Warranty:** 5 Years
- **Low Energy Consumption:** Only 20 Watts
- **Solid-State:** High-Shock- & High-Vibration-Resistant
- **Long Lifespan:** Lumen Maintenance >70% at 35,000 Hours of Operation*
- **Easy Installation** in Existing Fixtures with E39 Mogul or E26 Edison Screw-in Base
- **Optimized Circuitry:** Power Factor Corrected for Maximum Efficiency
- **High CRI** Enhances All Colors
- **Highest-Grade LEDs:** Uses White Premium Lighting-Class LEDs that are Test-Verified to LM-79 Standard
- **Even Lighting:** High Intensity / No Halation
- **Environment-Friendly:** RoHS Compliant



POWER SUPPLY TO BE LOCATED REMOTELY.

ANY BALLAST PRESENT NEEDS TO BE BYPASSED.

- Available Option: ARRA-Compliant USA-Made Product



* Rated average life based on engineering testing and probability analysis

APPLICATIONS

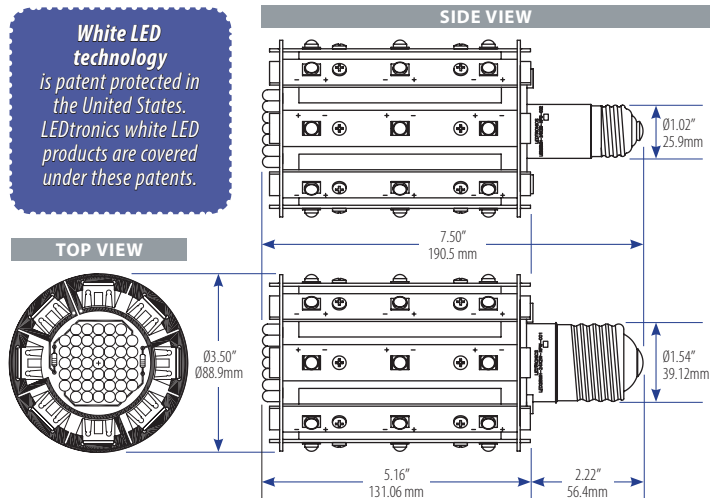
WHEREVER STRONG LIGHT IS NEEDED IN CONFINED SPACES

- Special Design Makes It Ideal for Compact Acorn & Globe Fixtures, Both in Post-Top and Pendant Configurations
- Streets / Walkways / Parks
- Canopies, Pedestrian Tunnels, Stairwells, Corridors, Jelly-Jar Fixtures, Garages and Parking Structures, Post-Top Bollards, Carriage Lanterns

BENEFITS

- **Major Energy Savings:** Over 70% Compared to MH or HPS Lamps
- **Low Maintenance:** Lowers Costs by Reducing Re-lamp Frequency
- **Environment-Friendly:** No Mercury Content, No Lead
- **No Hazardous Emissions:** No UV or IR Radiation – Does Not Attract Insects; No RF Interference
- **Reduces Light Pollution:** No Wasted Light, “Dark Skies Initiative”-Friendly
- **Enhances Vision:** Better Optical Acuity, Little or No Disability Glare as Compared with High Glare from HID Lamps
- **Instant Light:** No Flicker or Delayed Startup Time
- **Cool Operation:** Doesn't Get Hot to the Touch

White LED technology is patent protected in the United States. LEDtronics white LED products are covered under these patents.



SPECIFICATIONS

SPECIFICATIONS SUBJECT TO CHANGE WITHOUT NOTICE

| | |
|--------------------------------|--|
| PART NUMBER | E39 Base: LED28MH-24X2W-XPW-001 E26 Base: LED28MH-24X2W-XPW-002 |
| Emitted Color | Pure White |
| Color Temperature | 5000K -5500K |
| Illumination Pattern | 8 Radial Beams |
| Viewing Angle | 80° Beam 90° to Vert [Full Beam Width @ 50% Intensity] |
| Input Voltage | 100-277VAC [Tested @ 120VAC] |
| Input Current | 0.17A |
| Power Factor | 1.0 |
| Input Power | 20 Watts |
| Efficacy | 85 lm/Watt |
| Total Lumens | 1695 lm |
| Maximum Candela | 215 cd |
| Ambient Operating Temp. | ~-22°F to ~+122°F (~-30°C to ~+50°C) |
| Dimensions | Dia: 0.3.50" (88.9mm) / L: 7.50" (190.5mm) |
| Weight | 1.0875 lbs / 17.4 oz / 0.493 kg |



LED Post-Top Compact Lamps for Acorns, Globes & Pendants

LED28MH-24X2W-XPW-001 & LED28MH-24X2W-XPW-002

Luminaire Photometric Report

Filename: LED28MH-24X2W-XPW-001

Manufacturer: LEDTRONICS -

Luminaire: NO LENS, 120VAC, 20.1W

Luminaire Cat: LED28MH-24X2W-XPW-001

Lamp: LUMEN RATING: 1696.6LMS.

Lamp Output: 1 lamp(s), rated lamp lumens: 1696.6

Max Candela: 213.5 at Horizontal: 50, Vertical: 90

Luminous Opening: Point

Test: 06-07-12

Zonal Lumen Summary

| Zone | Lumens | % Lamp | % Luminaire |
|--------|---------|--------|-------------|
| 0-30 | 58.1 | 3.4% | 3.4% |
| 0-40 | 103.6 | 6.1% | 6.1% |
| 0-60 | 301.1 | 17.7% | 17.7% |
| 0-90 | 856.9 | 50.5% | 50.5% |
| 90-120 | 570.5 | 33.6% | 33.6% |
| 90-130 | 695.6 | 41% | 41% |
| 90-150 | 812.2 | 47.9% | 47.9% |
| 90-180 | 839.6 | 49.5% | 49.5% |
| 0-180 | 1,696.6 | 100% | 100% |

Total Efficiency: 100%

Illuminance at a Distance

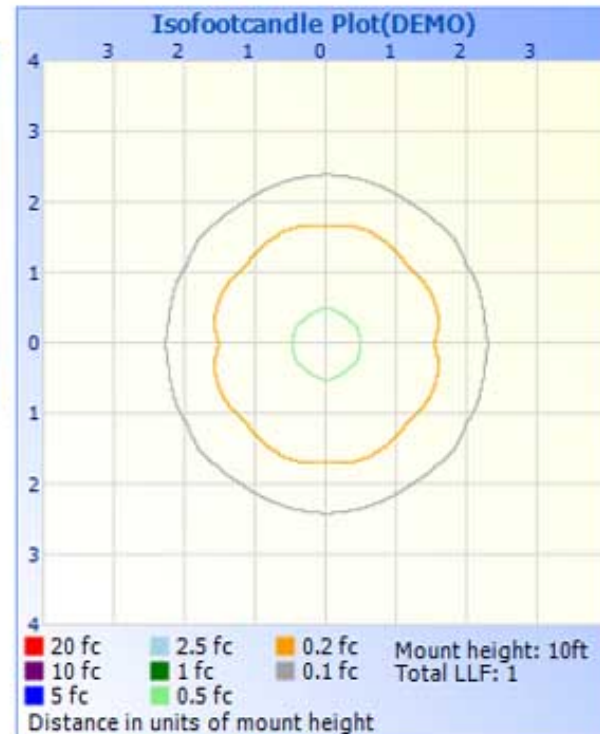
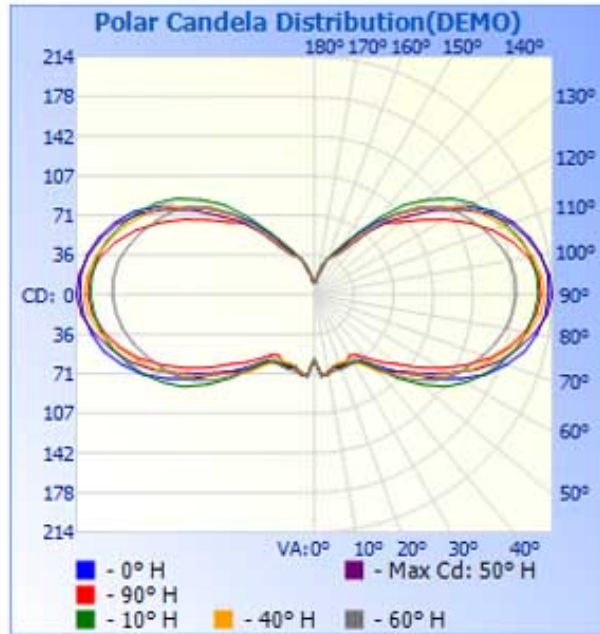
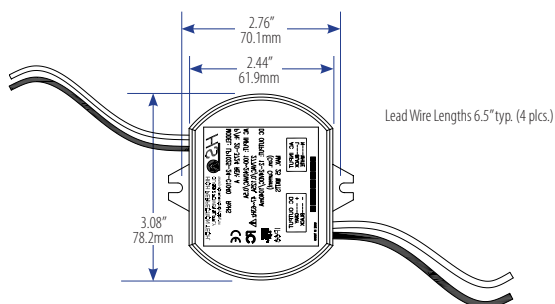
| | Center Beam FC | Beam Width |
|--------|----------------|------------|
| 1.7ft | 20.92 fc | 2.8ft |
| 3.3ft | 5.23 fc | 5.6ft |
| 5.0ft | 2.32 fc | 8.4ft |
| 6.7ft | 1.31 fc | 11.2ft |
| 8.3ft | 0.84 fc | 13.9ft |
| 10.0ft | 0.58 fc | 16.7ft |

■ Beam Spread: 79.8°

CUSTOM OPTIONS [For qualified applications & large-quantity OEM orders]

- Other White Color Temperatures available

POWER SUPPLY - TOP VIEW



Ideal for Use with Alternate or Renewable Energy Resources – Solar & Wind Power

AVAILABLE ARRA Compliant
OPTION: USA Made Product