



# DécorLED G25/E26 Medium-Base Globe Bulbs

DEC-G25(F)-xxW-120A



**Direct Incandescent Replacement — Consumes Only 1.3 Watts – Up to 90% Energy Savings**

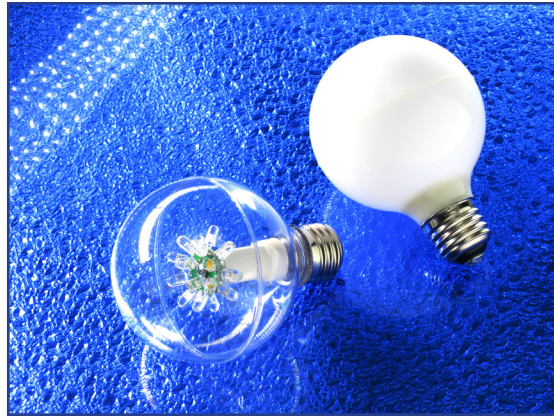
**Clear or Frosted G25 Globe Lens — Omnidirectional Beam Pattern — 3000K Warm / 5000K Pure White Colors**

## FEATURES

- **Warranty:** 3 Years
- **Major Power Savings:** Consumes Only 1.3 Watt or Less, Compares with 10W-15W Incandescents
- **Solid Construction:** Polycarbonate, UV-Stabilized Lens & Sleeve; Nickel-Plated Brass Base
- **Solid-State:** High-Shock & High-Vibration Resistant
- **Long Lifespan:** White LED Lumen Maintenance Greater than 70% at 35,000 Hours of Operation (*Rated average life based on engineering testing and probability analysis*)
- **IP50 Dust Protected:** Suitable for Damp Locations
- **Easy Installation:** Using Existing E26 Edison Screw-in Fixtures
- **Wide Ambient Oper. Temp. Range:** ~-22°F to ~+122°F [~-30°C to ~+50°C]
- **Eco-Friendly:** Parts with (\*) Are RoHS Compliant



*White LED technology is patent protected in the United States. LEDtronics white LED products are covered under these patents.*



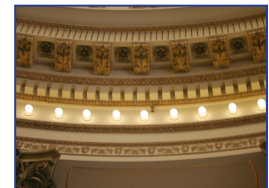
## BENEFITS

- **Low Power Consumption / High Intensity**
- **Low Maintenance:** No Filaments to Break; Lowers Costs by Reducing Re-lamp Frequency
- **Even Lighting:** High Intensity / No Halation
- **Eco-Friendly:** No Mercury, No Lead Content
- **Cool Operation:** Doesn't Get Hot to the Touch – Reduces A/C Load
- **No Hazardous Emissions:** No UV or IR Radiation / No RF Interference



## APPLICATIONS

- Wall Sconces & Lanterns
- Chandelier and Other Decorative Lighting
- Accent Lighting
- Signs and Marquees
- String Lighting



LEDtronics DEC-G25F frosted globe lamps used as accent lighting all around the inside perimeter of the rotunda at the Los Angeles County Natural History Museum

## SPECIFICATIONS

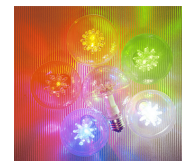
SPECIFICATIONS SUBJECT TO CHANGE WITHOUT NOTICE

<b>PART NO.</b>	DEC-G25(F)-xxW-120A
<b>Beam Pattern</b>	Omnidirectional
<b>Input Voltage</b>	120 VAC
<b>Base</b>	26mm E26 Edison Screw / Nickel-Plated Brass
<b>Lens</b>	Polycarbonate, UV-Stabilized
<b>Ambient Temp. Range</b>	~-22°F to ~+122°F [~-30°C to ~+50°C]
<b>Dimensions</b>	Dia Ø3.181" x L4.5" (DØ80.8mm x L114.3mm)
<b>Weight</b>	0.1125 lb / 1.8 oz / 51 g

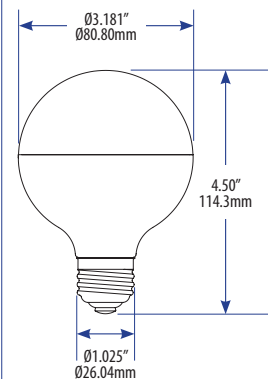
## CUSTOM OPTIONS

*[For qualified applications & large-quantity OEM orders]*

- Other **Voltages:** 12/14V, 24/28V, 240VAC
- Other **LED Colors:** Cool White, Red, Orange, Yellow, Green, Blue
- Other **Base Types or Sizes:** European E27
- Other **Lenses:** Colored Clear, Frosted Colored



**Ideal for Use with Alternate or Renewable Energy Resources — Solar & Wind Power**



PART NUMBER	INPUT CURRENT	ENERGY USED	EFFICACY	TOTAL LUMENS	CRI	COLOR TEMPERATURE	LED EMITTING COLOR	LENS
DEC-G25-SIW-120A	0.017 A	0.7 Watts	73 lm/W	51 lm	68	3000K	Warm White	Clear
DEC-G25-TPW-120A*	0.019 A	1.0 Watts	78 lm/W	78 lm	75	4800K - 5200K	True White	Clear
DEC-G25F-SIW-120A*	0.018 A	1.3 Watts	39 lm/W	51 lm	66	2800K - 3200K	Warm White	Frosted White
DEC-G25F-TPW-120A*	0.018 A	1.2 Watts	54 lm/W	65 lm	75	4800K - 5200K	True White	Frosted White

**LEDTRONICS®**  
Creating the Future of Light Since 1983™

© 2017 LEDtronics, Inc.



23105 Kashiwa Court, Torrance, CA 90505  
Phone: (800) 579.4875 / (310) 534.1505  
Fax: (310) 534.1424  
E-mail: info@ledtronics.com  
Website: ledtronics.com

www.LEDtronics.com

LOG 348 / Rev 02-2017

Check LEDTRONICS.COM for latest data.  
Printed material may be outdated.

## DEC-G25-SIW-120A

### Luminaire Photometric Report

Filename: DEC-G25-SIW-120A

Manufacturer: LEDTRONICS -

Luminaire: CLEAR LENS, 120VAC, 7W

Luminaire Cat: DEC-G25-SIW-120A

Lamp: LUMEN RATING: 50.8Lms.

Lamp Output: 1 lamp(s), rated lamp lumens: 50.8

Max Candela: 8.7 at Horizontal: 0, Vertical: 0

Luminous Opening: Point

Test: 10-22-10

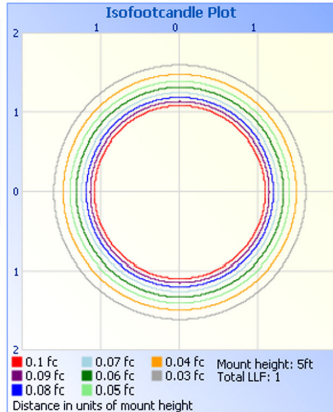
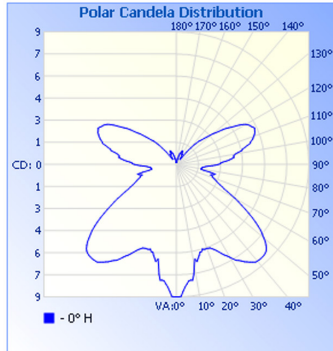
#### Zonal Lumen Summary

Zone	Lumens	% Lamp	% Luminaire
0-30	5.4	10.7%	10.7%
0-40	10.3	20.3%	20.4%
0-60	22.1	43.4%	43.5%
60-90	7.9	15.5%	15.5%
0-90	29.9	58.9%	58.9%
90-180	20.8	41%	41.1%
0-180	50.8	99.9%	100%

Total Efficiency: 99.9%

Illuminance at a Distance		
Center Beam FC	Beam Width	
0.8ft	12.59 fc	3.0ft
1.7ft	3.15 fc	6.0ft
2.5ft	1.40 fc	9.0ft
3.3ft	0.79 fc	12.0ft
4.2ft	0.50 fc	15.0ft
5.0ft	0.35 fc	18.0ft

Beam Spread: 121.9°



## DEC-G25F-SIW-120A

### Luminaire Photometric Report

Filename: DEC-G25F-SIW-120A

Manufacturer: LEDTRONICS -

Luminaire: FROSTED LENS, 120VAC, 1.3W

Luminaire Cat: DEC-G25F-SIW-120A

Lamp: LUMEN RATING: 50.9Lms.

Lamp Output: 1 lamp(s), rated lamp lumens: 50.9

Max Candela: 4.9 at Horizontal: 0, Vertical: 0

Luminous Opening: Point

Test: 10-22-10

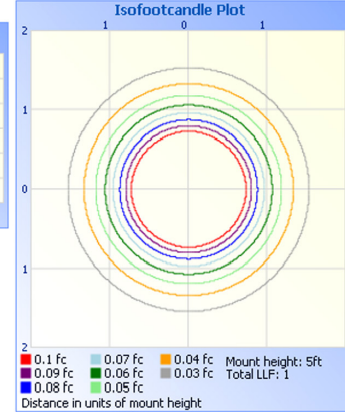
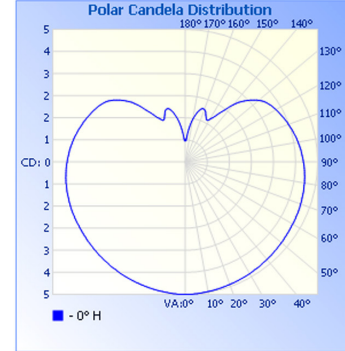
#### Zonal Lumen Summary

Zone	Lumens	% Lamp	% Luminaire
0-30	4.1	8%	8%
0-40	7.0	13.8%	13.8%
0-60	14.8	29.1%	29.1%
60-90	14.2	27.8%	27.9%
0-90	29.0	57%	57%
90-180	21.9	43%	43%
0-180	50.9	99.9%	100%

Total Efficiency: 99.9%

Illuminance at a Distance		
Center Beam FC	Beam Width	
0.8ft	7.07 fc	1.7ft
1.7ft	1.79 fc	3.3ft
2.5ft	0.79 fc	5.0ft
3.3ft	0.44 fc	6.7ft
4.2ft	0.28 fc	8.3ft
5.0ft	0.20 fc	10.0ft

Beam Spread: 90.0°



## DEC-G25F-TPW-120A

### Luminaire Photometric Report

Filename: DEC-G25F-TPW-120A

Manufacturer: LEDTRONICS -

Luminaire: FROSTED LENS, 120VAC, 1.2W

Luminaire Cat: DEC-G25F-TPW-120A

Lamp: LUMEN RATING: 65.2Lms.

Lamp Output: 1 lamp(s), rated lamp lumens: 65.2

Max Candela: 6.1 at Horizontal: 0, Vertical: 0

Luminous Opening: Point

Test: 08-31-11

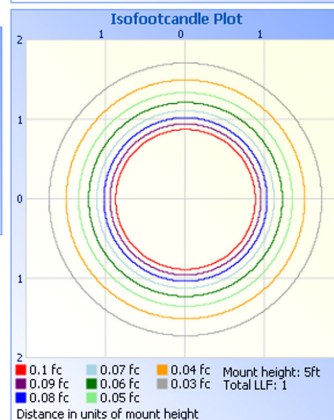
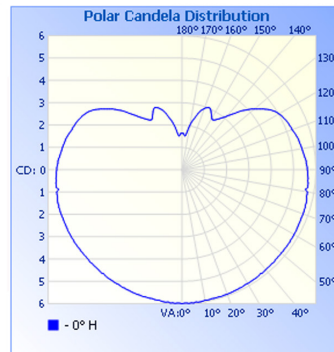
#### Zonal Lumen Summary

Zone	Lumens	% Lamp	% Luminaire
0-30	5.0	7.7%	7.7%
0-40	8.8	13.5%	13.5%
0-60	18.6	28.6%	28.6%
60-90	18.2	28%	28%
0-90	36.8	56.5%	56.6%
90-180	28.3	43.4%	43.4%
0-180	65.2	99.9%	100%

Total Efficiency: 99.9%

Illuminance at a Distance		
Center Beam FC	Beam Width	
0.8ft	8.76 fc	1.7ft
1.7ft	2.19 fc	3.3ft
2.5ft	0.97 fc	5.0ft
3.3ft	0.55 fc	6.7ft
4.2ft	0.35 fc	8.3ft
5.0ft	0.24 fc	10.0ft

Beam Spread: 90.0°



### CAUTION When Installing Lamps in Potentially Corrosive Outdoor Environments

LEDtronics suggests that a silicone moisture-barrier sealant be used to protect the metal-threaded base of the LED bulb.

Sealant is highly recommended for all outdoor-environment LED bulb installations to prevent water and/or moisture incursion that can lead to premature degradation of the bulb base and eventual bulb failure. **This is especially recommended for LED bulb installations near saltwater bodies.**

Dow Corning Molykote® 111 Valve Lubricant and Sealant is a high-temperature, moisture-resistant, silicone grease. If liberally applied to the clean surface of the lamp socket and the base of the lamp itself, it will provide moisture and corrosion resistance.