



# LED Street & Roadway M400-Style Cobrahead Luminaire

SLL002P-3D60W-XPW-004



Only 82 Watts – Replaces 200-250 Watt HPS — 100~277VAC — Typical Mounting Height: 25-50 feet — UL Listed

Module available to fit the standard roadway lighting cobrahead luminaires from major manufacturers

## FEATURES

- **Lamp Warranty:** 5 Years
- **UL Listed** to Applicable UL Standards and Requirements by Underwriters Laboratories Inc., File #E330342
- **Long Lifespan:** White LED Lumen Maintenance >70% at 50,000 Hours of Operation (Rated average life based on engineering testing and probability analysis)
- **Very Low Power Usage:** A Reduction of 193 Watts from the Standard 250W HPS Lamp (with 16-25 Watts Transformer Loss)
- **Standard Fixtures:** LED Cluster Works with GE Model M400 and AEL 125 Cobrahead Fixtures
- **Cooler Operation:** Lamp Assembly Ventilation Aids in Maintaining Cool-Running Lamp
- **Weatherproof:** Entire Lamp Assembly Is Sealed to Provide Added Protection from Adverse Environmental Conditions
- **Efficient Design:** LEDs Are Mounted to Provide Maximum Luminance at Desired Angles
- **Highest-Grade LEDs:** Uses Premium White Lighting-Class LEDs that Are Test-Verified to LM-79 Standard
- **Lab Tested** in Accordance with IES Standards
- **Solid-State:** High-Shock & High-Vibration Resistant

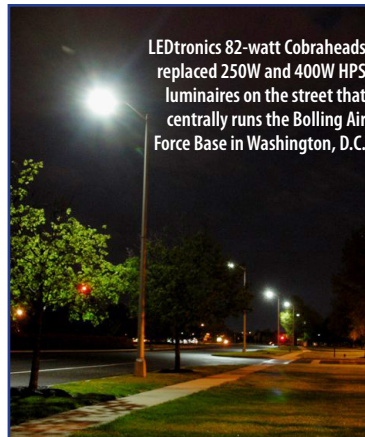


White LED technology is patent protected in the United States. LEDtronics white LED products are covered under these patents.

## SPECIFICATIONS

SPECIFICATIONS SUBJECT TO CHANGE WITHOUT NOTICE

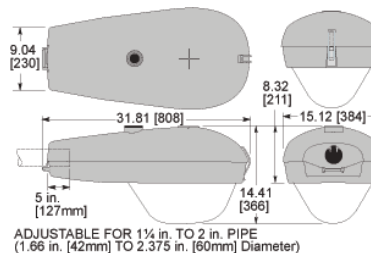
<b>PART NO.</b>	SLL002P-3D60W-XPW-004
<b>Emitted Color</b>	Pure White
<b>Color Temperature (CCT)</b>	5500K~6350K
<b>Color Rendering Index (CRI)</b>	76
<b>Beam Pattern</b>	Type III Asymmetric
<b>Full Viewing Angle</b>	2x40°@40°L, 40°@15°W [Full Beam Width @ 50% Intensity]
<b>Input Voltage</b>	100-277VAC [Tested @ 120VAC]
<b>Energy Used</b>	80 Watts
<b>Power Factor</b>	0.99
<b>Total Lumens</b>	4749 lm
<b>Efficacy</b>	59 lm/W
<b>Maximum Candela</b>	3236 cd
<b>Pipe Mounting Diameter</b>	1¼-2 in. Pipe (1.66 - 2.375 O.D.)
<b>Weight</b>	20 lbs / 9.1 kg



## BENEFITS

- **Major Energy Savings:** Up to 70% Compared to HPS (Based on 250W Lamp & 25W Transformer)
- **Low Maintenance:** Lowers Costs by Reducing Re-lamp Frequency
- **Environment-Friendly:** No Mercury Content, No Lead
- **No Extraneous Emissions:** No UV or IR Radiation – Does Not Attract Insects; No RF Interference
- **Reduces Light Pollution:** No Wasted Light, "Dark Skies Initiative"-Friendly – Eliminates Light Intrusion into Residences, Offices...
- **Enhances Vision:** Better Optical Acuity, Little or No Disability Glare as Compared with High Glare from HID Lamps
- **Cool Operation:** Doesn't Get Hot to the Touch

Ideal for Use with Alternate or Renewable Energy Resources – Solar & Wind Power



## CUSTOM OPTIONS [For qualified applications & large-quantity OEM orders]

- **Other Voltages:** 12V – 24V – 28V – 240V – 277V
- **Other LED Colors:** Red, Orange, Yellow, Cool White, Green, Blue
- **Other Cobrahead Model Numbers Available**

GE is a registered trademark of General Electric Company and is not affiliated with LEDtronics, Inc.®



© 2013 LEDtronics, Inc.



23105 Kashiwa Court, Torrance, CA 90505  
Phone: (800) 579.4875 / (310) 534.1505  
Fax: (310) 534.1424  
E-mail: info@ledtronics.com  
Website: ledtronics.com

# LED Street & Roadway Light Module for M400-Style Cobraheads

**SLL002P-3D60W-XPW-004**

## Luminaire Photometric Report

**Filename: SLL002P-3D60W-XPW-004**

Manufacturer: LEDTRONICS - LED COBRA HEAD LUMINAIRE  
Luminaire: WITH WHITE INTERIOR AND CLEAR PLASTIC DROP LENS  
Luminaire Cat: SLL002P-3D60W-XPW-004  
Lamp: 60 LEDs WITH INDIVIDUAL LENSES. LUMEN RATING: 4749 Lms.

Lamp Output: 1 lamp(s), rated Lumens/lamp: 4749  
Max Candela: 3,236.0 at Horizontal: 72.5°, Vertical: 42.5°

Luminous Opening: Point  
Test: 24189 CERTIFIED PHOTOPIC REPORT  
Test Lab: LIGHTING SCIENCES, INC.  
Photometry : Type C  
CIE Class: Direct  
Nema Type: 7 X 5

### Roadway Summary

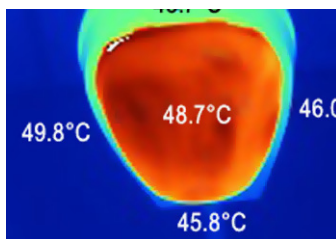
Cutoff Classification: CUTOFF  
Distribution: TYPE I, VERY SHORT  
Max Cd, 90 Deg Vert: 100.5  
Max Cd, 80 to <90 Deg: 234.7

	Lumens	% Lamp
Downward Street Side:	3,479.3	73.3%
Downward House Side:	1,217.0	25.6%
Downward Total:	4,696.3	98.9%
Upward Street Side:	36.1	0.8%
Upward House Side:	15.8	0.3%
Upward Total:	51.9	1.1%
<b>Total Lumens:</b>	<b>4,748.2</b>	<b>100%</b>

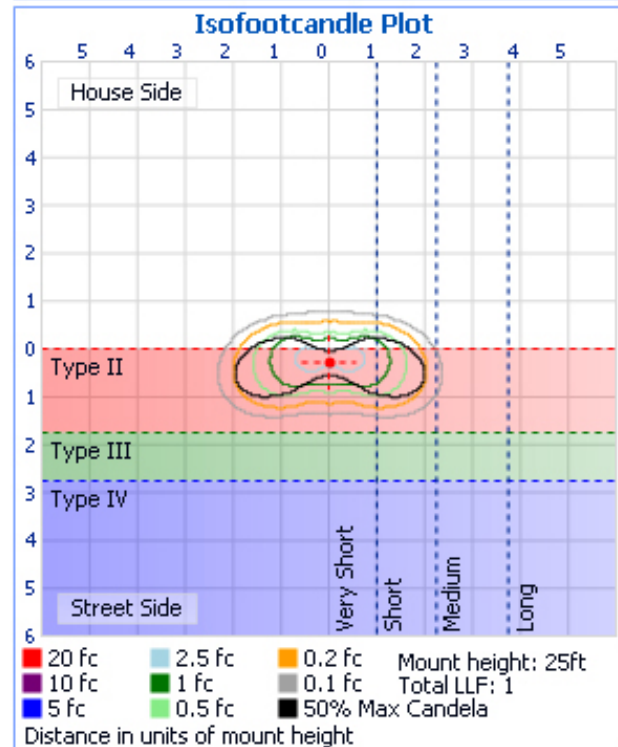
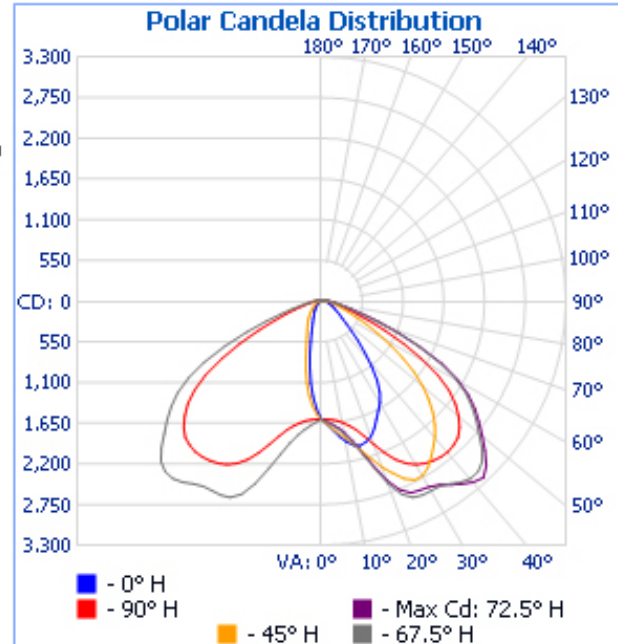
### Illuminance at a Distance

	Center Beam FC	Beam Width
4.0ft	99.83 fc	4.4ft 14.9ft
8.0ft	24.96 fc	8.9ft 29.8ft
12.0ft	11.09 fc	13.3ft 44.6ft
16.0ft	6.24 fc	17.7ft 59.5ft
20.0ft	3.99 fc	22.1ft 74.4ft
24.0ft	2.77 fc	26.6ft 89.3ft

■ Vert. Spread: 57.9°    ■ Horiz. Spread: 123.5°



**Infrared Imagery**  
Bottom View



**25 FEET**

TEST RESULTS CERTIFIED BY A THIRD PARTY