

Module available to fit the standard roadway lighting cobrahead luminaires from major manufacturers

Consumes Only 50 Watts — Replaces 150-175 Watt HPS — Typical Mounting Height: 22-24 feet

FEATURES

- Warranty:** 5 Years
- Cool Operation:** Lamp Assembly Ventilation Feature Aids to Maintain Cool-Running Lamp
- Long Operating Life:** White LEDs Last for up to 50,000+ Hours of Continuous Operation
- Major Power Savings:** 100 Watts Energy Reduction from the Standard 150W HPS Lamp (with 16-25W Standard Transformer Loss)
- Super Intensity:** 2,122 Candelas
- Weatherproof:** Entire Lamp Assembly Sealed to Provide Added Protection from Adverse Environmental Conditions
- Solid-State:** High-Shock- & High-Vibration-Resistant
- Optimized Design:** LEDs Mounted to Provide Maximum Luminance at Desired Angles to the Targeted Area
- Lab Tested** in Accordance with IES Standards
- Exterior Materials:** Die-Cast Aluminum Housing with Electrocoated Gray Paint Finish, Clear Polycarbonate Lens
- Standard Fixtures:** LED Cluster Works with GE Model M250 and AEL-115 Cobrahead Fixtures
- Less Weight:** Only 12 lbs as Compared to 39-42 lbs Conventional Lighting
- Input Power Surge Protection:** Onboard 40kA Varistor
- High CRI** of 75 Enhances All Colors
- Wide Ambient Operating Temp. Range:** ~-22°F to ~+122°F [~-30°C to ~+50°C]
- Safety Assurance:** ETL Listed



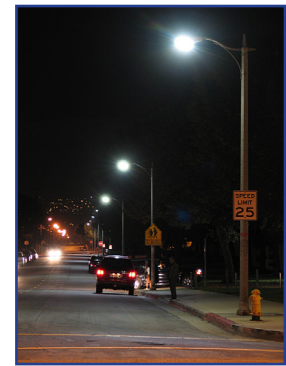
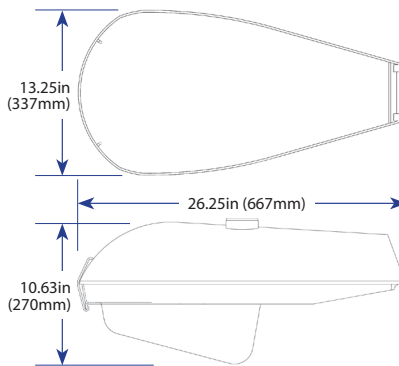
US Design patents
US D629,957 S
US D613,886 S



White LED technology is patent protected in the United States. LEDtronics white LED products are covered under these patents.

BENEFITS

- Major Energy Savings:** Up to 85% Compared to Incandescents
- Longer Life:** LEDs Are Maintenance-Free for over 5 Years of Continuous Use
- No Harmful Emissions:** No Infrared; No Ultraviolet—Does Not Attract Insects
- Instant-On:** No Delay in Re-Strike
- Reduces Light Pollution:** Night-Vision-Friendly, No Wasted Light — Eliminates Light Intrusion into Residences, Offices, Stores; "Dark Skies Initiative"-Friendly
- Enhances Night Vision:** Better Optical Acuity, Little or No Disability Glare as Compared with High Glare from HID Lamps



CUSTOM OPTIONS [For qualified applications & large-quantity OEM orders]

- Other Voltages Available:** 12V – 24V – 28V – 240V – 277V
- Other LED Colors Available:** Red, Orange, Yellow, Cool White, Green, Blue
- Other Cobrahead Model Numbers Available**

GE is a registered trademark of General Electric Company and is not affiliated with LEDtronics, Inc.®

SPECIFICATIONS

SPECIFICATIONS SUBJECT TO CHANGE WITHOUT NOTICE

PART NO.	SLL006P-3D86-TPW-004
Emitted Color	True White
Color Temperature (CCT)	4800K~5200K
Color Rendering Index (CRI)	75
Beam Pattern	Type II Asymmetric
Viewing Angle	[Full Beam Width @ 50% Intensity] Vert: 58° / Horiz: 140.6°
Input Current	437 mA
Input Voltage	100-277 VAC [Tested @ 120VAC]
Energy Used	50 Watts
Power Factor	0.996
Total Lumens	3,869 lm
Maximum Candela	2,122 cd @ Horiz: 80, Vert: 60
Efficacy	77 lm/W
Pipe Mounting Diameter	1¼-2 in. Pipe (1.66 - 2.375 O.D.)
Weight	20 lbs / 9.1 kg

Luminaire Photometric Report

Filename: SLL006P-3D86-TPW-004

Manufacturer: LEDTRONICS - LED ROADWAY LUMINAIRE

Luminaire: WITH WHITE INTERIOR AND CLEAR PLASTIC DROP LENS

Luminaire Cat: SLL006P-3D86-TPW-004

Lamp: 854 LEDs (5 ARRAYS), LUMINAIRE OUTPUT: 3869.1 lms.

Lamp Output: 1 lamp(s), rated lamp lumens: 3869.1

Max Candela: 2,122.5 at Horizontal: 80, Vertical: 60

Input Wattage: 50

Luminous Opening: Point

Test: 26594 1-25-10

Test Lab: LIGHTING SCIENCES, INC.

Roadway Summary

Cutoff Classification: NON-CUTOFF
Distribution: TYPE II, SHORT
Max Cd, 90 Deg Vert: 176.5
Max Cd, 80 to <90 Deg: 627.0

Lumens % Lamp

Downward Street Side: 2,647.5 68.4%
Downward House Side: 1,029.7 26.6%
Downward Total: 3,677.2 95%

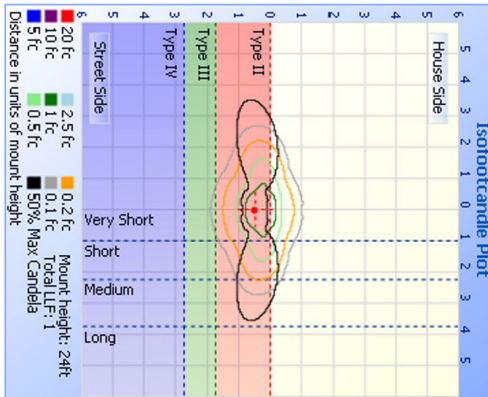
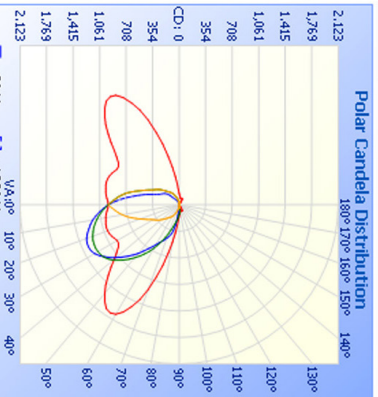
Upward Street Side: 105.5 2.7%
Upward House Side: 86.3 2.2%
Upward Total: 191.8 5%

Total Lumens: 3,869.1 100%

Illuminance at a Distance
Center Beam FC Beam Width
4.0ft 59.13 fc 4.7ft 26.9ft
8.0ft 14.78 fc 9.5ft 53.7ft
12.0ft 6.57 fc 14.2ft 80.6ft
16.0ft 3.70 fc 19.0ft 107.5ft
20.0ft 2.37 fc 23.7ft 134.4ft
24.0ft 1.64 fc 28.4ft 161.2ft
Vert. Spread: 61.3° Horiz. Spread: 146.8°

24 FEET

ideal
for use with
Alternate or
Renewable
Energy Resources
- Solar & Wind
Power



Luminaire Photometric Report

Filename: SLL006P-3D86-TPW-004

Manufacturer: LEDTRONICS -

Luminaire: WITH CLEAR LENS, 120WAC, 52.2W

Luminaire Cat: SLL006P-3D86-TPW-004

Lamp: LUMEN RATING: 3524.9lms.

Lamp Output: 1 lamp(s), rated lamp lumens: 3524.9

Max Candela: 1,998.0 at Horizontal: 80, Vertical: 55

Luminous Opening: Point

Test: 4-24-09

Roadway Summary

Cutoff Classification: NON-CUTOFF
Distribution: TYPE I, SHORT
Max Cd, 90 Deg Vert: 158.0
Max Cd, 80 to <90 Deg: 438.0

Lumens % Lamp

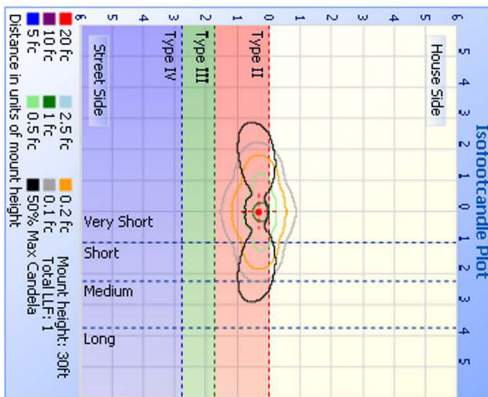
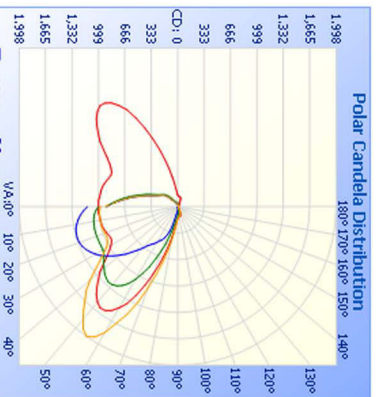
Downward Street Side: 2,329.1 66.1%
Downward House Side: 954.4 27.1%
Downward Total: 3,283.5 93.2%

Upward Street Side: 123.6 3.5%
Upward House Side: 117.8 3.3%
Upward Total: 241.5 6.9%

Total Lumens: 3,524.9 100%

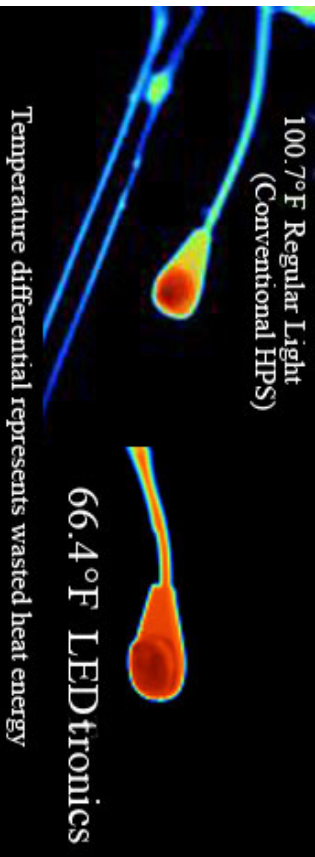
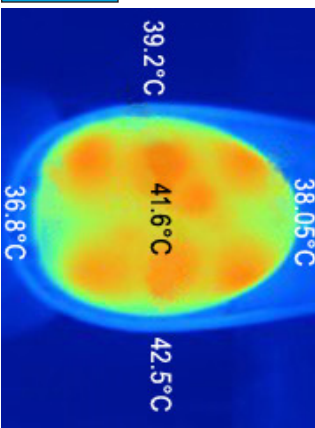
Illuminance at a Distance
Center Beam FC Beam Width
5.0ft 45.48 fc 5.5ft 27.9ft
10.0ft 11.37 fc 11.1ft 55.8ft
15.0ft 5.05 fc 16.6ft 83.8ft
20.0ft 2.84 fc 22.2ft 111.7ft
25.0ft 1.82 fc 27.7ft 139.6ft
30.0ft 1.26 fc 33.2ft 167.5ft
Vert. Spread: 58.0° Horiz. Spread: 140.6°

30 FEET



Infrared Imagery

TOP VIEW



Temperature differential represents wasted heat energy